



Paper Towels

Advantage®

- An economical, absorbent 2-ply paper towel.

Scottex®

- A quality, soft absorbent 1-ply paper towel.
- Features absorbency pockets that help keep towels from falling apart.

Bounty®

- Premium, quilted, 2-ply paper towel.
- The most absorbent towel on the market.

Paper Towels

Stock Number	Brand Name	Ply	Sheets Per Roll	Rolls Per Case
TTHT1	Advantage®	2	85	30
TTHT1S	Scottex®	1	128	20
TTHT2P	Bounty®	2	52	30



Toilet Tissue

Advantage®

- Economical quality tissue available in 1 or 2-ply.

Scott® Surpass®

- A soft, strong, high quality 2-ply tissue.

Kleenex® Cottonelle®

- Super soft, premium 2-ply toilet tissue.

Toilet Tissue

Stock Number	Brand Name	Ply	Sheets Per Roll	Rolls Per Case
TT1BT	Advantage®	1	1,000	96
TT2BT	Advantage®	2	500	96
TT2BTS	Scott® Surpass®	2	605	80
TT2BTK	Kleenex® Cottonelle®	2	505	60



Jumbo Toilet Tissue

Reduce roll changes with jumbo tissue rolls.

Advantage®

- Economical quality tissue available in 1 or 2-ply.

Scott® Surpass®

- A soft, strong, high quality 2-ply tissue.

Kleenex® Cottonelle®

- Super soft, premium 2-ply toilet tissue.

Jumbo Toilet Tissue

Stock Number	Brand Name	Ply	Roll Size	Rolls Per Case
TT1JT	Advantage®	1	3.7" x 2,000'	12
TT2JT	Advantage®	2	3.7" x 1,000'	12
TT2JTS	Scott®	2	3.7" x 1,000'	12
TT2JTK	Kleenex® Cottonelle®	2	3.7" x 750'	12



Facial Tissue

Advantage®

- Economical, quality facial tissue.

Kleenex®

- High quality tissue in a flat dispenser box.

Kleenex® Boutique®

- Quality tissue in a space-saving dispenser box.

Facial Tissue

Stock Number	Brand Name	Ply	Sheets Per Box	Boxes Per Case
TT2FT	Advantage®	2	100	30
TT2FTK	Kleenex®	2	125	48
TT2FTKB	Kleenex® Boutique®	2	95	36

Multi-Fold Towels

Advantage®

- Economical. Available in kraft and white.

Scott® Surpass®

- Super-strong, quality towels.

Kleenex®

- Premium quality towels with superior hand-drying performance.



Multi-Fold Towels

Stock Number	Brand Name	Color	Sheets Per Pack	Packs Per Case
TTKMT	Advantage®	Kraft	250	16
TTWMT	Advantage®	White	250	16
TTWMTS	Scott® Surpass®	White	200	20
TTWMTK	Kleenex®	White	120	20

C-Fold Towels

Advantage®

- Economical white towels.

Scott® Surpass®

- Super-strong, quality towels.

Kleenex®

- Premium quality towels with superior hand-drying performance.



C-Fold Towels

Stock Number	Brand Name	Color	Sheets Per Pack	Packs Per Case
TTWCF	Advantage®	White	150	16
TTWCF S	Scott® Surpass®	White	150	16
TTWCFK	Kleenex®	White	150	16

Single-Fold Towels

Advantage®

- Economical. Available in kraft and white.

Scott®

- Super-strong, quality towels.



Single-Fold Towels

Stock Number	Brand Name	Color	Sheets Per Pack	Packs Per Case
TTKSF	Advantage®	Kraft	250	16
TTWSF	Advantage®	White	250	16
TTWSFS	Scott®	White	250	16

Hard Wound Roll Towels

Advantage®

- Economical. Available in kraft and white.

Scott® Surpass®

- Quality towels available in kraft and white.

Kleenex®

- Premium quality towels with superior hand-drying performance.

Hard Wound Roll Towels

Stock Number	Brand Name	Color	Roll Size	Rolls Per Case
TTKRT	Advantage®	Kraft	8" x 350'	12
TTWRT	Advantage®	White	8" x 350'	12
TTKRTS	Scott®	Kraft	8" x 400'	12
TTWRTS	Scott®	White	8" x 400'	12
TTWRTK	Kleenex®	White	8" x 425'	12



Twin Tissue Dispenser

Dispenses two rolls of standard size tissue up to 5 1/2" diameter.

- Core: 1 1/2" Diameter.



Twin Tissue Dispenser

Stock Number	Dimensions H x W x D	Capacity	Quantity Per Case
TTD105	8 3/4" x 12 1/2" x 6"	Two Rolls	1

Single Jumbo Tissue Dispenser

Universal for all brands of 9" jumbo tissue.

- Core: 2 1/4" x 3 1/4".



Single Jumbo Tissue Dispenser

Stock Number	Dimensions H x W x D	Capacity	Quantity Per Case
TTD110	11 1/2" x 10 1/8" x 5 1/2"	One Roll	1

Twin Jumbo Tissue Dispenser

Sliding panel prevents access to spare roll until first roll is depleted.

- Core: 2 1/4" x 3 1/4".
- Roll Size: 9".



Twin Jumbo Tissue Dispenser

Stock Number	Dimensions H x W x D	Capacity	Quantity Per Case
TTD115	12 1/2" x 20 1/2" x 5 1/2"	Two Rolls	1

Lever Action Roll Towel Dispenser

Handles most types of hard wound roll towels without jamming.

- Roll Size: 8".



Lever Action Roll Towel Dispenser

Stock Number	Dimensions H x W x D	Capacity	Quantity Per Case
TTD120	15 1/2" x 12 3/4" x 10 1/4"	One Roll	1

C-Fold/Multi-Fold Towel Dispenser

Flip door transforms to a C-Fold or Multi-Fold cabinet.

- Maximum Towel Size: 10 1/4" x 3 3/4".



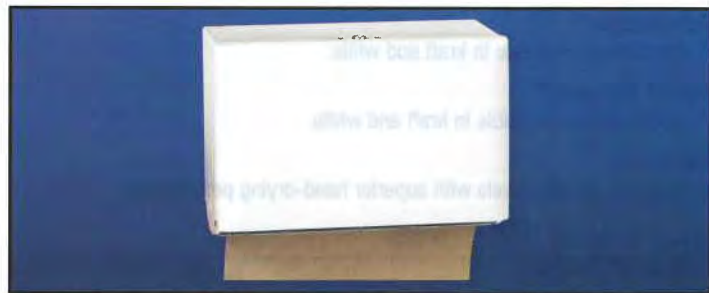
C-Fold/Multi-Fold Towel Dispenser

Stock Number	Dimensions H x W x D	Capacity	Quantity Per Case
TTD125	14 3/4" x 12 1/8" x 5 1/2"	300 (C) - 500 (M)	1

Single-Fold Towel Dispenser

Single-Fold hand towel cabinet with standard key lock.

- Maximum Towel Size: 10 1/4" x 3 3/4".
- Construction: 20-gauge steel.



Single-Fold Towel Dispenser

Stock Number	Dimensions H x W x D	Capacity	Quantity Per Case
TTD130	7 1/2" x 10 1/2" x 6"	500	1

Kimberly-Clark® WypAll® X80 ShopPro® Wipers

Engineered to perform better than rags and shop towels.

- The toughest wiper on the market!
- Absorbs more oil and water, pound for pound, than laundered shop towels.
- No holes, strings, metal chips or residues (unlike shop towels).
- Maintains strength in solvents.

Kimberly-Clark® WypAll® X80 Wipers

Stock Number	Description	Basis Weight	Wiper Size	Wipers Per Case
KW101	X80 - Dispenser Box	74 lbs.	12½" x 16¾"	160
KW102	X80 - Jumbo Roll	74 lbs.	12½" x 13¾"	475
KW103	Jumbo Roll Dispenser			



Kimberly-Clark® WypAll® X70 & X60 Wipers

WypAll® X70 Industrial Wipers

- The ideal rag replacement system!
- Pound for pound, absorbs more oil and water than rags.
- Cleans oil, grime and solvent with one wipe.

WypAll® X60 Industrial Wipers

- Great absorbing power in a light-weight wiper.
- Tough enough for big jobs - soft enough for face and hands.
- Reinforced for extra scrubbing and cleaning power.

Kimberly-Clark® WypAll® X70 & X60 Wipers

Stock Number	Description	Basis Weight	Wiper Size	Wipers Per Case
KW105	X70 - Dispenser Box	48 lbs.	12½" x 16"	152
KW104	X60 - Dispenser Box	38 lbs.	12½" x 16½"	180

Kimberly-Clark® WypAll® L40 All Purpose Wipers

An outstanding general-purpose wiper for a variety of industrial cleaning applications.

- Easily absorbs liquids, lubricants and oils.
- Soft enough for use on face and hands.
- The standard for over 20 years for general-purpose wiping!

Kimberly-Clark® WypAll® L40 Wipers

Stock Number	Description	Basis Weight	Wiper Size	Wipers Per Box	Boxes Per Case
KW106	L40 - Bulk Pack	48 lbs.	12½" x 14½"	56	18
KW107	L40 - Dispenser Box	48 lbs.	10" x 11½"	90	9



Kimberly-Clark® WypAll® L30 Economy Wipers

Offers a lighter-weight wiper at an economical price.

- Cloth-like feel at a value price.
- Strong yet soft for personal use.
- Ideal for a range of light-duty maintenance, processing and janitorial wiping.

Kimberly-Clark® WypAll® L30 Wipers

Stock Number	Description	Basis Weight	Wiper Size	Wipers Per Box	Boxes Per Case
KW108	L30 - Bulk Pack	34 lbs.	12½" x 14½"	90	12
KW109	L30 - Dispenser Box	34 lbs.	10" x 11½"	120	10

Kimberly-Clark® Kimwipes® EX-L

The industry standard for lab science and research.

- Engineered for performance and purity.
- Low-lint wipers.
- 1-ply for delicate tasks.
- Convenient pop up box.
- Soft, gentle and absorbent.



Kimwipes®

Stock Number	Description	Wiper Size	Wipers Per Box	Boxes Per Case
KW111	EX-L Pop Up Box	15" x 16.8"	140	15

Box of Rags

Withstands industrial wiping and polishing applications.

- Soft and absorbent.
- Cotton/polyester blend.
- Available in new white knit or sanitized reclaimed white knit.
- Ten pounds per case.



Box of Rags

Stock Number	Type	Material	Pounds Per Case
BR101	T-Shirt Rags	New white knit	10
BR102	T-Shirt Rags	Reclaimed white knit	10

Center Pull Towels

Unique center pull design reduces towel waste.

- Soft and absorbent.
- Perforated rolls dispense easily.
- Center pull dispenser accommodates both brands of towels below.



Center Pull Towels

Stock Number	Brand Name	Ply	Sheet Size	Sheets Per Roll	Rolls Per Case
TT2CP	Advantage®	2	8" x 10"	600	6
TT2CPS	Scott® Center Flow®	2	8" x 15"	500	4
TTD118	Center Pull Towel Dispenser				

3M Maintenance Sorbent

High-capacity sorbent is an easy-to-use solution for cleaning up spills, drips and leaks.

- Folded sorbent technology can be used in pillow, pad, roll or boom configuration.
- Reinforced on one side to increase strength and help eliminate linting.
- Dispenses from a portable dispenser box.
- Roll is perforated every 16" for easy tear off.



3M Maintenance Sorbent

Stock Number	3M Part Number	Roll Width	Roll Length	Dispensers Per Case
MROS3M110	MFL550	5"	50'	3

Scrubs in-a-Bucket®

Pre-moistened, heavy-duty towels easily remove soil from your hands.

- Portable and convenient.
- Conditions and softens.
- Use on tools, equipment and work surfaces.
- Works fast on dirt, oils, adhesives, lubricants, paints, grease, tar, urethanes, epoxies, inks and dyes, sealants and caulks.



Scrubs in-a-Bucket®

Stock Number	Description	Buckets Per Case
SCRUBS	72 count Scrubs dispenser	6

Softsoap® & Dispenser

Softsoap® is gentle enough for any skin type yet eliminates dirt and germs.

- Antibacterial.
- Contains light moisturizers to help hands feel soft.
- Dermatologist-tested formula.



Softsoap® & Dispenser

Stock Number	Description	Quantity Per Case
SOFTGAL	1 Gallon Softsoap®	4
TTD135	Push Button Hand Soap Dispenser	1

Sharpshooter™ No-Rinse Cleaner

No-rinse formulated cleaner quickly removes soil, grease and floor finish buildup.

- Penetrates and loosens buildup quickly.
- No rinsing required.



Sharpshooter™ No-Rinse Cleaner

Stock Number	Size	Quantity Per Case
MROS3M116*	1 Quart	12
MROS3M117	5 Gallons	1

* Includes one trigger sprayer per case.

3M Creme Cleanser

Designed to remove soap scum, hard water and mineral deposits, grease, rust stains and soil from hard surfaces such as stainless steel, bathroom fixtures and ceramic.

- Extra-thick clinging formula rinses clean.
- Phosphate-free cleanser contains very fine grade abrasive particles.



3M Creme Cleanser

Stock Number	Size	Quantity Per Case
MROS3M122	1 Quart	12

Troubleshooter™ Liquid Finish Remover

Sprayable foam formula removes soil and finish buildup.

- Use on baseboards, floor edges, corners, stairways and ceramic tile.
- Thick solution clings to vertical surfaces.



Troubleshooter™ Liquid Finish Remover

Stock Number	Size	Quantity Per Case
MROS3M118*	1 Quart	6

* Includes one trigger sprayer per case.

Scotchgard™ Carpet Stain Remover

Ready-to-use liquid stain remover specially formulated for daily use on common spots and spills.

- No mixing or diluting required.
- Leaves no sticky residue.



Scotchgard™ Carpet Stain Remover

Stock Number	Size	Quantity Per Case
MROS3M121	1 Quart	12

3M All Purpose Cleaner Concentrate

Concentrated product designed for general cleaning including floors, walls, countertops, desks, painted and other washable surfaces.

- Cleans and deodorizes in one step.
- Effective on various soiled conditions.
- Leaves no film or residue.



3M All Purpose Cleaner Concentrate

Stock Number	Size	Quantity Per Case
MROS3M114	1 Gallon	4

3M Heavy-Duty Degreaser Concentrate

Developed for extremely tough jobs.

- Quickly penetrates grease, oil and a variety of soils.
- Ideal for cleaning machinery, engines, factory floors, tools, trucks and metal parts.
- Can be diluted with up to 100 parts of water.
- Can be used in automatic scrubbers, pressure washers and mop buckets.



3M Heavy-Duty Degreaser Concentrate

Stock Number	Size	Quantity Per Case
MROS3M115	1 Gallon	4

3M Neutral Quat Disinfectant Concentrate

Rinse-free, EPA-registered, hospital grade quaternary disinfectant cleaner kills HBV, HIV-1, MRSA, VRE, Herpes Simplex I and II, and other pathogens.

- Use on washable, hard, nonporous surfaces.
- Low-foaming, neutral pH formula.



3M Natural Quat Disinfectant Concentrate

Stock Number	Size	Quantity Per Case
MROS3M119	1 Gallon	4

3M Stainless Steel Cleaner and Polish

Ideally suited for stainless steel, laminated plastics, chrome and aluminum surfaces.

- High gloss formula wipes clean without streaks or buildup.
- Resists fingerprints and masks surface blemishes.
- Light protective film slows resoiling.
- Aerosol spray leaves no greasy build-up on surfaces.
- Dispenses as a white, non-evaporating foam.
- Contains no petroleum distillates.
- Pleasant lime fragrance.



3M Stainless Steel Cleaner and Polish

Stock Number	Size	Cans Per Case
MROS3M101	21 oz.	12

3M Citrus Base Cleaner

Multi-purpose cleaner dissolves and flushes away dirt, grease, tar and most adhesive films.

- Citrus oil based cleaner emulsifies when flushed with water.
- Contains no petroleum distillates.
- Use to clean and degrease metal parts.
- Easy application by aerosol spray.



3M Citrus Base Cleaner

Stock Number	Size	Cans Per Case
ADH3MCB	24 oz.	12

3M Silicone Lubricant (Dry Type)

Eliminates rubber squeaks, prevents sticking and seals out moisture.

- Fast acting aerosol spray.
- Contains no petroleum oils to stain fabrics.
- Preserves rubber, plastic and leather.
- Use to lubricate moving parts and to protect against rust.
- Prevents glue and wax build up.
- Will not freeze at -28° F.
- Will not degrade at 350° F.



3M Silicone Lubricant (Dry Type)

Stock Number	Size	Cans Per Case
ADH3MSL	24 oz.	12

3M 5-Way Penetrant

Inhibits rust and corrosion by spreading a thin, even film that penetrates the pores of surfaces.

- Displaces moisture and "dries out" electrical parts to help prevent shorting and increase conductivity.
- Aerosol spray on penetrant frees rusted, frozen bolts, nuts and screws.
- Lubricates delicate machines and instruments.
- Penetrates and demoisturizes.
- Ideal as a tapping lubricant for stainless steel and aluminum.



3M 5-Way Penetrant

Stock Number	Size	Cans Per Case
ADH3M5W	24 oz.	12

WD-40

Over 2,000 documented uses with more uses discovered everyday!

- Removes adhesives, bugs and tar.
- Protects tools and equipment from rust and corrosion.
- Penetrates stuck and rusted parts.
- Draws out moisture to restore wet equipment.
- Cleans grease, grime and dirt.
- Convenient aerosol spray.



WD-40

NEW!

Stock Number	Size	Cans Per Case
MROS1001	11 oz.	12

Graffiti & Spray Paint Remover

High quality graffiti remover will not run off of vertical surfaces.

- Gel formula stays on surfaces long enough to emulsify and remove paint without extra clean up.
- Use on metal, glass, fiberglass, baked enamels, porcelain, brick, concrete and marble.
- Convenient aerosol spray.



Graffiti & Spray Paint Remover

NEW!

Stock Number	Size	Cans Per Case
MROS1002	20 oz.	12

3M Blue Cleaner Pad 5300

Best choice for removing one or two coats of floor finish prior to recoating.

- Polyester and nylon fibers with dispersed abrasive particles.
- Can also be used for heavy-duty spray cleaning or foam scrubbing.
- Removes dirt, spills and scuffs leaving a clean surface ready for recoating.
- May be used with detergent solution to scrub hard surface floors.
- Use on low speed (175-600 RPM) rotary or automatic equipment.
- Reversible.



3M Blue Cleaner Pad 5300

Stock Number	Pad Diameter	Center Hole Diameter	Nominal Thickness	Quantity Per Case
MROS3M104	19"	3 3/4"	1"	5

3M Black Stripper Pad 7200

The industry standard for use with water-based floor finish stripping solutions.

- Can also be used to clean heavily soiled concrete floors.
- Maintains high performance throughout the life of the pad.
- Removes scuffs and black heel marks to enhance floor appearance.
- Mineral abrasive intended to be used with water based floor finish stripping solutions to remove old soiled floor finishes and sealers.
- Use on low speed (175-600 RPM) rotary or automatic equipment.



3M Black Stripper Pad 7200

Stock Number	Pad Diameter	Center Hole Diameter	Nominal Thickness	Quantity Per Case
MROS3M105	19"	3 3/4"	.75"	5

3M Red Buffer Pad 5100

Best choice for spray cleaning and dry buffing a variety of floor finishes.

- Mineral abrasive cleans when damp and buffs when dry.
- Quickly cleans and removes scuff marks to enhance floor appearance.
- May also be used for light scrubbing with an automatic scrubber.
- Use on low speed (175-600 RPM) rotary or automatic equipment.
- Reversible.



3M Red Buffer Pad 5100

Stock Number	Pad Diameter	Center Hole Diameter	Nominal Thickness	Quantity Per Case
MROS3M106	19"	3 3/4"	1"	5

3M General Purpose Floor Brush 53

For scrubbing most floor surfaces including tile, brick, vinyl, marble, stone and other uneven surfaces.

- Unique wedge design provides multiple cleaning edges that get uneven surfaces cleaner.
- Silicone carbide abrasive intended for medium-duty scrubbing of uneven surfaces.
- Use on low speed (175-350 RPM) rotary or automatic equipment.
- Designed for medium-duty scrubbing.



3M General Purpose Floor Brush 53

Stock Number	Brush Diameter	Center Hole Diameter	Nominal Thickness	Quantity Per Case
MROS3M107	19"	3 3/4"	1"	1

Scotch-Brite™ Heavy-Duty Commercial Scouring Pad 86

Use in the kitchen to replace scrapers, steel wool and metal sponges.

- Tough fibers and abrasives clean grills and ovens and remove baked-on food from kitchen and cooking equipment.
- May also be used to remove scuff marks on floors.



Scotch-Brite™ Scouring Pad 86

Stock Number	Material	Length	Width	Quantity Per Case
MROS3M108	Synthetic Fiber	9"	6"	36

Scotch-Brite™ Medium-Duty Scrub Sponge 74

Dual-action absorbent sponge and scouring pad makes cleanup fast and efficient.

- Green cleaning pad on one side and yellow cellulose sponge on the other.
- Intended for use on walls, tables, fixtures, countertops and floors.



Scotch-Brite™ Scrub Sponge 74

Stock Number	Material	Length	Width	Quantity Per Case
MROS3M109	Cellulose/Synthetic Fiber	6.1"	3.6"	20



Sweeping Compound

Specially formulated from oil, sand and sawdust for excellent cleaning on coarser floors.

- Designed for use on ordinary wood, metal and concrete floors.
- Sanded oil base.

Sweeping Compound

Stock Number	Description	Boxes Per Skid
SWEEP	100 lb. Box of Sweeping Compound	24



Oil Dry

Provides an easy and fast means to absorb most liquid spills!

- Naturally absorbs most liquids including most oils, water, mixtures of soluble oils and water, grease, acids, inks and paints.
- Holds its weight in liquid.
- Can be used as winter traction.
- 50 pound bag.

Oil Dry

Stock Number	Description	Bags Per Skid
OILDRY	50 lb. Bag of Oil Dry	40



Ice Melt

Reduce ice hazards on walkways and parking areas with fast-acting Ice Melt!

- Specially formulated mix provides sub-zero melting.
- Provides a blue, non-staining water soluble coverage.
- Contains anti-caking agents that provide easy flow for ice melt spreaders.

Ice Melt

Stock Number	Description	Boxes Per Skid
IM50	50 lb. Bag of Ice Melt	48



Wet Floor Sign

Alert employees and visitors of wet floors!

- Sturdy construction - molded from bright yellow plastic to attract immediate attention.
- Features clearly printed message in English and Spanish as well as international pictorial for easy comprehension.
- Hinged handle allows sign to fold flat for convenient storage.

Wet Floor Sign

Stock Number	Description	Boxes Per Skid
JAN103	Wet Floor Sign	6



Bucket/Wringer

Maxi-Tuff™ Bucket/Wringer

- Efficient side pressure wringer for use with up to 32 oz. mops.
- Non-rusting and corrosion resistant.
- 33 quart bucket.

Readi-Clean™ Bucket/Wringer

- Separates clean and dirty water for cleaner mopping.
- Efficient side pressure wringer for use with up to 32 oz. mophead.
- 36 quart bucket.

Bucket/Wringer

Stock Number	Description	Boxes Per Skid
JAN104	Maxi-Tuff™ Bucket/Wringer	1
JAN105	Readi-Clean™ Bucket/Wringer	1



Dust Pans

Large Plastic Dust Pan

- Molded from heavy-duty plastic.
- Deep 2½" back height for big cleanups.
- 12" flexible lip catches fine dust.

Lobby Dust Pan

- Durable handle made from extruded aluminum.
- Handle locking feature ensures that handle stays upright.
- Collection bin is constructed from high impact styrene for long service.
- Durable rear wheels improve wear resistance.

Dust Pans

Stock Number	Description	Boxes Per Skid
JAN101	Large Plastic Dust Pan	12
JAN102	Lobby Dust Pan	6

Brooms

Feather Tip Push Broom

- Soft PVC Feather Tip® bristles sweep fine dust.
- Handle sold separately.

Plastic Bristle Push Broom

- Features 2 types of bristles: Soft PVC Feather Tip® sweeps fine dust and polypro moves medium dirt.
- Handle sold separately.

Palmyra Bristle Push Broom

- Long wearing natural bristles work well on wet or dry floors.
- Handle sold separately.

Upright Angle Broom

- Polypro fibers with flagged tip.
- Handle included.



Brooms & Handles

Stock Number	Description	Quantity Per Case
JAN110	Light-Duty 18" - Feather Tip Push Broom Head	12
JAN111	Light-Duty 24" - Feather Tip Push Broom Head	12
JAN112	Light-Duty 36" - Feather Tip Push Broom Head	4
JAN114	Medium-Duty 18" - Plastic Bristle Push Broom Head	12
JAN113	Medium-Duty 24" - Plastic Bristle Push Broom Head	12
JAN116	Heavy-Duty 24" - Natural Palmyra Push Broom Head	12
JAN120	60" Wood Handle with Metal Threads (for use w/heads listed above)	12
JAN121	60" Black Metal Handle with Metal Threads (for use w/heads listed above)	12
JAN115	11" - Upright Angle Broom (handle included)	6

Wet Mops

Economy Cotton Mop Head

- Cut-end 4-ply yarn.
- 1¼" narrow band.
- Good for general purpose mopping.

Heavy-Duty Cotton Mop Head

- Premium looped-end 4-ply yarn.
- No fraying or unplying of strands.
- No tangled ends.
- Absorbent and durable.
- Launderable.
- 5" mesh band with fantail.

Quick Change™ Janitor Mop Stick

- Plated steel wire head with spring action locks mophead into place.
- Black oxide head for corrosion resistance.
- 1½" x 54" Firm-Grip™ metal ribbed handle.
- Can be used for all size mop heads.



Wet Mops & Handle

Stock Number	Description	Quantity Per Case
JAN150	Economy Mop Head #24 - Cut End	12
JAN151	Heavy-Duty Mop Head #16 - Looped End	12
JAN152	Heavy-Duty Mop Head #24 - Looped End	12
JAN156	Quick Change 54" Mop Stick w/Black Handle	12

Dust Mops

Economy Dust Mop Kit

- Untreated cotton yarn dry dust mop.
- Assembled kit includes head, frame and handle.
- Replacement heads sold separately.

Deluxe Dust Mop Kit

- Launderable, 2-ply construction.
- Pretreated cotton yarn dust mop.
- Assembled kit includes head, frame and handle.
- Replacement heads sold separately.



Dust Mop Kits with Handle

Stock Number	Description	Quantity Per Case
JAN130	Economy 24" Dry Dust Mop Kit	4
JAN131	Economy 36" Dry Dust Mop Kit	2
JAN132	Economy 48" Dry Dust Mop Kit	2
JAN133	Deluxe 24" Pretreated Dust Mop Kit	4
JAN134	Deluxe 36" Pretreated Dust Mop Kit	2
JAN135	Deluxe 48" Pretreated Dust Mop Kit	2

Replacement Heads

Stock Number	Description	Quantity Per Case
JAN136	Economy 24" Dry Dust Mop Replacement Head	12
JAN137	Economy 36" Dry Dust Mop Replacement Head	12
JAN138	Economy 48" Dry Dust Mop Replacement Head	12
JAN139	Deluxe 24" Pretreated Dust Mop Replacement Head	12
JAN140	Deluxe 36" Pretreated Dust Mop Replacement Head	12
JAN141	Deluxe 48" Pretreated Dust Mop Replacement Head	12

Floor Squeegees

Straight 24" Floor Squeegee

- Removes water and wet debris on floors.
- Tough, long-lasting rubber squeegee strip.
- Heavy-duty steel frame construction.

Curved 24" Floor Squeegee

- Curved blade controls clean-up.
- Removes water and wet debris on floors.
- Tough, long-lasting rubber squeegee strip.
- Heavy-duty steel frame construction.

60" Tapered Wood Handle

- Sold separately.
- Smooth finish helps reduce hand discomfort.



Floor Squeegees

Stock Number	Description	Quantity Per Case
JAN160	Straight 24" Floor Squeegee	6
JAN161	Curved 24" Floor Squeegee	6
JAN163	60" Tapered Wood Handle	6

Foam Cups

Eliminate the need to wash coffee mugs by using disposable cups!

- Insulated for hot or cold liquids.
- Made from white polystyrene.
- Not manufactured with chlorofluorocarbons.



Foam Cups

Stock Number	Description	Quantity Per Case
CUP60Z	6 oz. Styrofoam Cups	1,000
CUP80Z	8 oz. Styrofoam Cups	1,000
CUP100Z	10 oz. Styrofoam Cups	1,000
CUP120Z	12 oz. Styrofoam Cups	1,000
CUP140Z	14 oz. Styrofoam Cups	1,000
CUP160Z	16 oz. Styrofoam Cups	1,000
CUP200Z	20 oz. Styrofoam Cups	500

Cold Cups

Durable plastic cups hold your cold beverages!

- Translucent cups are disposable yet sturdy enough to be reused.
- Non-insulated cups are made to hold cold liquids only.
- Constructed from rigid plastic.



Cold Cups

Stock Number	Description	Quantity Per Case
CUP12P	12 oz. Plastic Cold Cups	1,000
CUP16P	16 oz. Plastic Cold Cups	1,000
CUP20P	20 oz. Plastic Cold Cups	1,000

Plastic Utensils

Disposable plastic utensils are perfect for lunch rooms, cafeterias and restaurant carry-out orders.

- Strong plastic construction.
- Cost effective - no washing or lost silverware costs.



Plastic Utensils

Stock Number	Description	Color	Quantity Per Case
PW104	Plastic Fork	White	1,000
PW105	Plastic Knife	White	1,000
PW106	Plastic Spoon	White	1,000

Paper Napkins

Paper luncheon napkins for casual dining applications.

- Soft napkins feel better on hands than paper towels.
- Single-ply construction.
- 500 napkins per pack.
- 12.5" x 11.7".



Paper Napkins

Stock Number	Description	Color	Quantity Per Case
PW103	Paper Napkins	White	6,000

Cone Paper Cups

Cone Paper Cups are ideal for water coolers in the workplace.

- Economical - small size conserves water usage.
- Constructed from linerless paper and features a rolled rim to hold shape.
- Disposable.



Cone Paper Cups

Stock Number	Description	Quantity Per Case
CUP40Z	4 oz. Cone Paper Cups	5,000

Paper Plates

Sturdy paper plates are disposable and won't melt with hot food or in the microwave.

- Work well for both cold or hot food.
- Heavy-duty plates are perfect for heavy or moist food applications.
- Microwavable.



Paper Plates

Stock Number	Description	Color	Quantity Per Case
PW101	9" Medium-Duty Plate	White	500
PW102	9" Heavy-Duty Plate	White	500

Can Liners

The can liner of choice for heavy-duty uses. Liners are made from specially formulated linear low density resins.

- High performance can liner with star sealed bottom.
- Flat folded for convenient single bag dispensing.



Clear Can Liners

Stock Number	Size	Mil	Capacity (Gallons)	Color	Quantity Per Case
LBF2423LC	24" x 23"	0.4	6-7	Clear	1,000
LBF2423HC	24" x 23"	0.7	6-7	Clear	500
LBF2431LC	24" x 31"	0.4	8-10	Clear	1,000
LBF2431MC	24" x 31"	0.5	8-10	Clear	500
LBF3036MC	30" x 36"	0.5	20-30	Clear	250
LBF3036HC	30" x 36"	0.7	20-30	Clear	250
LBF3339MC	33" x 39"	0.5	33	Clear	250
LBF3390HC	33" x 39"	0.7	33	Clear	250
LBF3339XC	33" x 39"	0.9	33	Clear	250
LBF3339X3C	33" x 39"	1.5	33	Clear	125
LBF4046MC	40" x 46"	0.5	40	Clear	250
LBF4046HC	40" x 46"	0.7	40	Clear	125
LBF4046XC	40" x 46"	0.9	40	Clear	100
LBF4046X3C	40" x 46"	1.5	40	Clear	100
LBF3658MC	36" x 58"	0.5	55	Clear	200
LBF3658HC	36" x 58"	0.7	55	Clear	200
LBF3658XC	36" x 58"	0.9	55	Clear	100
LBF3658X3C	36" x 58"	1.5	55	Clear	100

Black Can Liners

Stock Number	Size	Mil	Capacity (Gallons)	Color	Quantity Per Case
LBF2325LB	22½" x 24½"	0.4	6-7	Black	1,000
LBF2325HB	22½" x 24½"	0.7	6-7	Black	500
LBF2325XB	22½" x 24½"	1.0	6-7	Black	500
LBF2333LB	23" x 33"	0.4	8-10	Black	1,000
LBF2333HB	23" x 33"	0.7	8-10	Black	500
LBF2333XB	23" x 33"	1.0	8-10	Black	500
LBF3036XB	30" x 36"	0.9	20-30	Black	250
LBF3036X2B	30" x 36"	1.2	20-30	Black	250
LBF3340MB	33" x 40"	0.5	33	Black	250
LBF3340HB	33" x 40"	0.7	33	Black	250
LBF3340XB	33" x 40"	0.9	33	Black	200
LBF3340X2B	33" x 40"	1.2	33	Black	150
LBF3340X3B	33" x 40"	1.5	33	Black	100
LBF3340X4B	33" x 40"	1.7	33	Black	100
LBF3340X5B	33" x 40"	2.0	33	Black	100
LBF4046MB	40" x 46"	0.5	40	Black	250
LBF4046HB	40" x 46"	0.7	40	Black	125
LBF4046XB	40" x 46"	0.9	40	Black	100
LBF4046X2B	40" x 46"	1.2	40	Black	100
LBF4046X3B	40" x 46"	1.5	40	Black	100
LBF4046X4B	40" x 46"	1.7	40	Black	100
LBF4046X5B	40" x 46"	2.0	40	Black	75
LBF3658X2B	36" x 58"	1.2	55	Black	100
LBF3658X3B	36" x 58"	1.5	55	Black	100
LBF3658X5B	36" x 58"	2.0	55	Black	75



Tyco® Sure-Sak® Can Liners

Premium grade Sure-Sak® Liners provide superior puncture resistance and performance. Manufactured from specially formulated linear low density resins.

- The solution for heavy trash loads.

Tyco® Sure-Sak® Can Liners

Stock Number	Size	Mil	Capacity (Gallons)	Color	Quantity Per Case
LSS3036X4S	30" x 36"	1.5	20-30	Silver	100
LSS3340X4S	33" x 40"	1.5	33	Silver	100
LSS3946X4S	39" x 46"	1.7	40-45	Silver	50
LSS3956X4S	39" x 56"	1.7	55	Silver	50





Rubbermaid Tilt Trucks

Rugged construction makes transporting heavy loads easier.

- Easy to handle and maneuver through commercial doorways and onto elevators.
- Constant force design allows for controlled dumping by one person.
- Inset wheels (½ cu. yd. and 1 cu. yd. models) protect walls.
- Smooth surface is easy to clean and resists pitting and corroding.
- Domed Hinged Lids sold separately.



Domed Hinged Lids

Stock Number	Description	Fits Tilt Truck	Color	Quantity Per Case
RUB155L	Domed Hinged Lid	½ cu. yd.	Black	1
RUB156L	Domed Hinged Lid	1 cu. yd.	Black	1
RUB159L	Domed Hinged Lid	1½ cu. yds.	Black	1

Tilt Trucks

Stock Number	Description	Capacity		Color	Quantity Per Case
		Volume	Weight		
RUB155	Utility Grade Tilt Truck	½ cu. yd.	450 lbs.	Black	1
RUB156	Utility Grade Tilt Truck	1 cu. yd.	850 lbs.	Black	1
RUB157	Standard-Duty Tilt Truck	1 cu. yd.	1,250 lbs.	Black	1
RUB158	Standard-Duty Tilt Truck	1 cu. yd.	1,250 lbs.	Red	1
RUB159	Standard-Duty Tilt Truck	1½ cu. yds.	1,200 lbs.	Black	1
RUB160	Heavy-Duty Tilt Truck	1 cu. yd.	2,100 lbs.	Black	1

Brute® Roll Out Containers

Easy mobility for general refuse collection and material handling.

- Heavy-duty, one-piece handle provides large, strong grip area.
- Low base is designed for stability.
- Features inset wheels and foot tilter.



Brute® Roll Out Containers

Stock Number	Description	Capacity	Color	Quantity Per Case
RUB131	Brute® Roll Out Container	50 Gallons	Gray	1
RUB132	Brute® Roll Out Container	65 Gallons	Gray	1
RUB133	Brute® Roll Out Container	95 Gallons	Gray	1

Mega Brute®

Mobile waste collection and sortation system.

- Innovative design for improved productivity and ease of use.
- Easy-access rear doors.
- Integrated storage for cleaning supplies.
- Easily maneuverable 12" wheels.
- Holds 23 gallon Slim Jim® and 55 gallon trash can liner.



Mega Brute® Container

Stock Number	Description	Capacity	Color	Quantity Per Case
RUB100	Mega Brute® Container	120 Gallons	Black	1

Rubbermaid Recycling Containers

Deskside Recycling Container

- All-plastic construction and fits under standard height desk.

Recycling Bin

- Stack and nestable bins feature built-in handles.
- Perfect for curbside recycling.

Slim Jim® Recycling Container

- Convenient central collection site for multiple work stations.
- Efficient size and shape for tight spaces.

Brute® Recycling Container without Lid

- Can be used with Brute® Dolly #RUB129, sold separately (page 175).

Recycling Containers

Stock Number	Description	Capacity	Color	Quantity Per Case
RUB139	Deskside Recycling Container	28 Quarts	Blue	1
RUB140	Recycling Bin	14 Gallons	Blue	1
RUB138	Slim Jim® Recycling Container	23 Gallons	Blue	1
RUB141	Brute Recycling Container	32 Gallons	Blue	1



Brute® Containers, Lids & Accessories

Solutions for making waste collection more efficient, combined with quality, durability and superior performance.

- All-plastic, professional-grade construction resists dents and will not rust, chip or peel. Strong, snap on lids provide secure, stable stacking.
- 44 gallon containers feature venting channels, can liner cinches and fully round ProTouch™ handles that provide a comfortable grip during lifting.
- Brute® Dolly fits all. Brute Rim Caddy® fits 44 gallon containers only.

Brute® Lids and Accessories

Stock Number	Description	Fits Brute® Container	Color	Quantity Per Case
RUB120L	Brute® Flat Lid	32 Gallon	Gray	1
RUB121L	Brute® Flat Lid	32 Gallon	Red	1
RUB122L	Brute® Flat Lid	32 Gallon	Yellow	1
RUB123L	Brute® Flat Lid	44 Gallon	Gray	1
RUB124L	Brute® Flat Lid	44 Gallon	Red	1
RUB125L	Brute® Flat Lid	44 Gallon	Yellow	1
RUB126L	Brute® Flat Lid	55 Gallon	Gray	1
RUB127L	Brute® Flat Lid	55 Gallon	Red	1
RUB128L	Brute® Flat Lid	55 Gallon	Yellow	1
RUB120D	Brute® Domed Lid	32 Gallon	Gray	1
RUB121D	Brute® Domed Lid	32 Gallon	Red	1
RUB123D	Brute® Domed Lid	44 Gallon	Gray	1
RUB124D	Brute® Domed Lid	44 Gallon	Red	1
RUB126D	Brute® Domed Lid	55 Gallon	Gray	1
RUB127D	Brute® Domed Lid	55 Gallon	Red	1
RUB129	Brute® Dolly	All	Black	1
RUB130	Brute Rim Caddy®	44 Gallon	Yellow	1



Brute® Containers

Stock Number	Description	Capacity	Color	Quantity Per Case
RUB120C	Brute® Container	32 Gallons	Gray	1
RUB121C	Brute® Container	32 Gallons	Red	1
RUB122C	Brute® Container	32 Gallons	Yellow	1
RUB123C	Brute® Container	44 Gallons	Gray	1
RUB124C	Brute® Container	44 Gallons	Red	1
RUB125C	Brute® Container	44 Gallons	Yellow	1
RUB126C	Brute® Container	55 Gallons	Gray	1
RUB127C	Brute® Container	55 Gallons	Red	1
RUB128C	Brute® Container	55 Gallons	Yellow	1

Rubbermaid Trash Cans

Slim Jim® Trash Can

- Efficient size and shape fits tight spaces.
- Durable, all-plastic construction for easy cleaning and long life.

Soft Plastic Trash Can

- Fits under standard height desk.
- Rolled rims add strength.



Trash Cans

Stock Number	Description	Capacity	Color	Quantity Per Case
RUB134	Slim Jim® Trash Can	23 Gallons	Gray	1
RUB135	Soft Plastic Trash Can	28 Quarts	Black	1
RUB136	Soft Plastic Trash Can	28 Quarts	Beige	1

Rubbermaid Hands-Free Receptacle

Perfect for lobbies, restrooms, shopping malls and restaurants.

- Durable and crack resistant.
- Controls litter, odors and insects.
- Drop and swing lid sold separately.



Hands-Free Receptacle

Stock Number	Description	Capacity	Color	Quantity Per Case
RUB137C	Hands-Free Container	35 Gallons	Beige	1
RUB137L	Hands-Free Lid		Beige	1

Rubbermaid Domed Waste Receptacles

Durable Marshal® Classic containers are FM approved for fire safety.

- Includes retainer hardware for securing and concealing can liners.
- Stainless steel model includes a galvanized steel removable liner.



Domed Waste Receptacles

Stock Number	Description	Capacity	Color	Quantity Per Case
RUB145	Domed Waste Receptacles	25 Gallons	Beige	1
RUB146	Domed Waste Receptacles	25 Gallons	Brown	1
RUB147	Domed Waste Receptacles	15 Gallons	Stainless Steel	1

Glutton® Container

Largest capacity containers for indoor and outdoor use.

- Built to withstand extreme weather and handling.
- Perfect for large crowds and high-traffic areas.
- Hooded top sold separately.



Glutton® Container

Stock Number	Description	Capacity	Color	Quantity Per Case
RUB142	Glutton® Container	56 Gallons	Off White	1
RUB143	Glutton® Lid without Doors		Red	1

Metal Platform Cart

Constructed from sturdy 12 gauge steel to withstand years of use.

- Removable cross-brace handle can be inserted on either end of the platform.
- Extra large 8" diameter wheels (sold separately) are easily maneuverable.
- Wheel Set includes: 2 swivel wheels and 2 rigid wheels.



Metal Platform Cart

NEW!

Stock Number	(W x L) Deck Size	Load Capacity	Quantity Per Case
WS1020	24" x 48"	2,200 lbs.	1
WS1021	30" x 60"	2,200 lbs.	1
WS1025	Wheel Set - (4) 8" x 2" Moldon Rubber on cast iron hub.		1

Aluminum Hand Cart

Easy to handle, multi-purpose truck is ideal for maneuvering around office or retail settings.

- Light-weight all aluminum construction.
- Semi-pneumatic wheels are rupture-proof and shock absorbing.
- Heavy-duty 7½" x 14" nose plate.
- Both trucks are 49" high and 18" wide.
- Assembly required.



Aluminum Hand Cart

NEW!

Stock Number	Handle Type	Load Capacity	Wheels	Quantity Per Case
WS1030	Continuous	600 lbs.	10" Solid Rubber	1
WS1031	Continuous	600 lbs.	10" Semi-Pneumatic	1

Aluminum Convertible Hand Cart

Versatile two wheel hand truck converts into a four wheel platform truck.

- Sturdy yet light-weight aluminum frame.
- Non-marking swivel pneumatic wheels.
- 18" noseplate for wide loads.
- Overall height 51¼".
- Frame bed size 12" x 38".
- Assembly required.



Aluminum Convertible Hand Cart

NEW!

Stock Number	Handle Type	Capacity Up	Capacity Down	Wheels	Quantity Per Case
WS1032	Dual/Continuous	500 lbs.	1,000 lbs.	10" Pneumatic	1

Wood Platform Cart

Strong hardwood deck withstands your toughest tasks.

- Hardwood deck is kiln dried and sealed for moisture resistance.
- Extra sturdy triple cross-brace handle.
- Wheel Set includes: 2 swivel wheels and 2 rigid wheels (sold separately).



Wood Platform Cart

NEW!

Stock Number	(W x L) Deck Size	Load Capacity	Quantity Per Case
WS1022	24" x 48"	2,200 lbs.	1
WS1023	30" x 60"	2,200 lbs.	1
WS1024	36" x 72"	2,200 lbs.	1
WS1025	Wheel Set - (4) 8" x 2" Moldon Rubber on cast iron hub.		1

Heavy-Duty Steel Hand Cart

This workhorse features double welded frame construction.

- Solid rubber wheels maneuver well over rough surfaces.
- Continuous loop handle allows for easy one-handed push/pull operation.
- Heavy-duty 8" x 14" beveled nose plate.
- Both trucks are 48" high and 22½" wide.
- Pre-assembled.



H.D. Steel Hand Cart

NEW!

Stock Number	Handle Type	Load Capacity	Wheels	Quantity Per Case
WS1026	Dual Handle	800 lbs.	10" Solid Rubber	1
WS1027	Continuous	800 lbs.	10" Solid Rubber	1

Heavy-Duty Steel Convertible Hand Cart

Converts easily between a two wheel hand truck and a four wheel platform truck.

- Sturdy double cross-brace handle.
- High performance steering casters allow for easy maneuvering.
- Heavy-duty 7½" x 14" nose plate.
- Overall height 53".
- Frame bed size 14" x 44½".
- Pre-assembled.



H.D. Steel Convertible Hand Cart

NEW!

Stock Number	Handle Type	Capacity Up	Capacity Down	Wheels	Quantity Per Case
WS1028	Continuous	800 lbs.	1,000 lbs.	10" Solid Rubber	1

Utility Cart

Perfect for transporting equipment and heavy loads in any environment.

- Heavy-duty structural foam construction; won't rust, dent, chip or peel.
- Tray shelves keep items in place.
- Large, non-marking 5" casters.
- Assembly required.



Utility Carts **NEW!**

Stock Number	(L x W x H) Dimensions	Shelves	Load Capacity	Color	Quantity Per Case
RUB161	40" x 18" x 33"	2	500 lbs.	Black	1
RUB162	40" x 18" x 33"	3	500 lbs.	Black	1
RUB163	45" x 26" x 33"	2	500 lbs.	Black	1
RUB164	45" x 26" x 33"	3	500 lbs.	Black	1
RUB165	55" x 25" x 33"	2	750 lbs.	Black	1

Flat Shelf Cart

Versatile flat shelves designed to transport oversized, bulky items.

- Makes a convenient mobile work surface.
- Sturdy structural foam construction; won't rust, dent, chip or peel.
- Large, non-marking 5" casters.
- Assembly required.



Flat Shelf Carts **NEW!**

Stock Number	(L x W x H) Dimensions	Shelves	Load Capacity	Color	Quantity Per Case
RUB166	38" x 19" x 33"	2	500 lbs.	Black	1
RUB167	44" x 26" x 33"	2	500 lbs.	Black	1

Mobile Work Center

Portable, heavy-duty work surface and storage drawers.

- Built-in cord wrap allows neat storage of power tools and work lights.
- Casters lock for safety.
- Locking bar provides security and holds drawers securely in place.
- Pegboard side panels.



Mobile Work Center **NEW!**

Stock Number	(L x W x H) Dimensions	Drawers	Load Capacity	Color	Quantity Per Case
RUB169	33" x 20" x 33"	5	250 lbs.	Black	1

Audio/Video Cart

Keep expensive equipment safe during transport.

- Commercial-grade aluminum uprights with attractive molded shelves.
- UL rated and CSA listed 3-outlet power strip includes handy cord wrap to secure loose cord.
- 4" diameter non-marking and locking swivel casters provide easy mobility.
- Assembly required.



Audio/Video Cart **NEW!**

Stock Number	(L x W x H) Dimensions	Load Capacity	Color	Quantity Per Case
RUB168	32" x 19" x 42"	200 lbs.	Black	1

Triple® Trolley

Transports large, bulky loads and folds flat for easy storage.

- Sturdy structural foam deck won't rust, dent, chip or peel.
- Non-skid platform surface helps prevent load shifting.
- Tough plastic construction.
- Three position straight handle lets users push, pull or fold flat for use as a dolly.
- 3" non-marking casters.



Triple® Trolley **NEW!**

Stock Number	(L x W) Deck Size	Casters	Load Capacity	Quantity Per Case
RUB170	32½" x 20½"	3" Non-Marking	250 lbs.	1

Mail Carts

Ideal for carrying files, mail and parcels around the office.

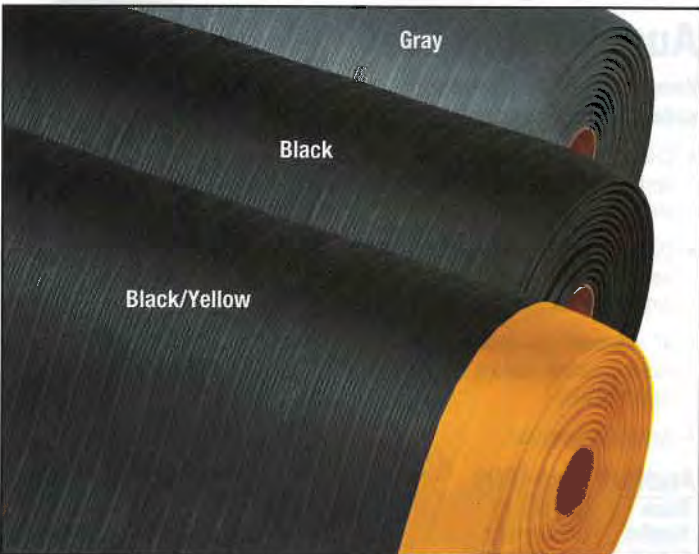
- Removable baskets.
- Nickel chrome plated steel construction.
- Easy to maneuver in tight spaces.
- Assembly required.



WS1035

Mail Carts **NEW!**

Stock Number	(L x W x H) Dimensions	Casters	Load Capacity	Quantity Per Case
WS1034	33" x 20" x 37½"	4" Rigid/4" Swivel	200 lbs.	1
WS1035	33½" x 23¼" x 38¼"	5" Swivel/10" Semi-Pneum.	200 lbs.	1



Economy Anti-Fatigue Mats

Basic anti-fatigue protection.

- PVC closed cell foam relieves leg and back discomfort.
- Provides a barrier to cold floors.
- All four sides are beveled to minimize trip hazards.
- Choose from gray, black or black/yellow.



Economy Anti-Fatigue Mats

Stock Number	Size	Thickness	Available Colors
MAT101*	2' x 3'	3/8"	Gray, Black or Black/Yellow
MAT102*	2' x 6'	3/8"	Gray, Black or Black/Yellow
MAT103*	27" x 3'	3/8"	Gray, Black or Black/Yellow
MAT104*	27" x 5'	3/8"	Gray, Black or Black/Yellow
MAT105*	2' x 8'	3/8"	Gray, Black or Black/Yellow
MAT106*	2' x 10'	3/8"	Gray, Black or Black/Yellow
MAT107*	2' x 16'	3/8"	Gray, Black or Black/Yellow
MAT108*	2' x 20'	3/8"	Gray, Black or Black/Yellow
MAT109*	2' x 60'	3/8"	Gray, Black or Black/Yellow
MAT110*	3' x 3'	3/8"	Gray, Black or Black/Yellow
MAT111*	3' x 5'	3/8"	Gray, Black or Black/Yellow
MAT112*	3' x 6'	3/8"	Gray, Black or Black/Yellow
MAT113*	3' x 8'	3/8"	Gray, Black or Black/Yellow
MAT114*	3' x 9'	3/8"	Gray, Black or Black/Yellow
MAT115*	3' x 10'	3/8"	Gray, Black or Black/Yellow
MAT116*	3' x 12'	3/8"	Gray, Black or Black/Yellow
MAT117*	3' x 15'	3/8"	Gray, Black or Black/Yellow
MAT118*	3' x 60'	3/8"	Gray, Black or Black/Yellow
MAT119*	4' x 4'	3/8"	Gray, Black or Black/Yellow
MAT120*	4' x 6'	3/8"	Gray, Black or Black/Yellow
MAT121*	4' x 10'	3/8"	Gray, Black or Black/Yellow
MAT122*	4' x 12'	3/8"	Gray, Black or Black/Yellow
MAT123*	4' x 16'	3/8"	Gray, Black or Black/Yellow
MAT124*	4' x 60'	3/8"	Gray, Black or Black/Yellow

* Please specify Gray, Black or Black/Yellow.

Marble Anti-Fatigue Mats

Smooth marble-pattern top surface of 1/8" heavy-duty rubber is combined with 3/8" dense foam base.

- Overall mat thickness is 1/2 inch.
- Sloped beveled foam on all four sides affords easy access onto and off of mat.



Marble Anti-Fatigue Mats

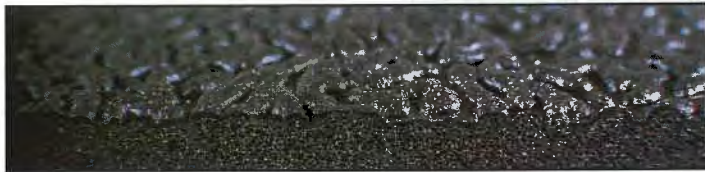
Stock Number	Size	Thickness	Available Colors
MAT201*	18" x 30"	1/2"	Black, Blue, Walnut or Gray
MAT202*	2' x 3'	1/2"	Black, Blue, Walnut or Gray
MAT203*	2' x 4'	1/2"	Black, Blue, Walnut or Gray
MAT204*	2' x 6'	1/2"	Black, Blue, Walnut or Gray
MAT205*	2' x 8'	1/2"	Black, Blue, Walnut or Gray
MAT206*	2' x 10'	1/2"	Black, Blue, Walnut or Gray
MAT207*	3' x 5'	1/2"	Black, Blue, Walnut or Gray
MAT208*	3' x 6'	1/2"	Black, Blue, Walnut or Gray
MAT209*	3' x 8'	1/2"	Black, Blue, Walnut or Gray
MAT210*	3' x 10'	1/2"	Black, Blue, Walnut or Gray
MAT211*	3' x 15'	1/2"	Black, Blue, Walnut or Gray
MAT212*	4' x 6'	1/2"	Black, Blue, Walnut or Gray

* Please specify Black, Blue, Walnut or Gray.

Premium Anti-Fatigue Mats

Non-directional top surface ensures excellent traction and is easy to clean.

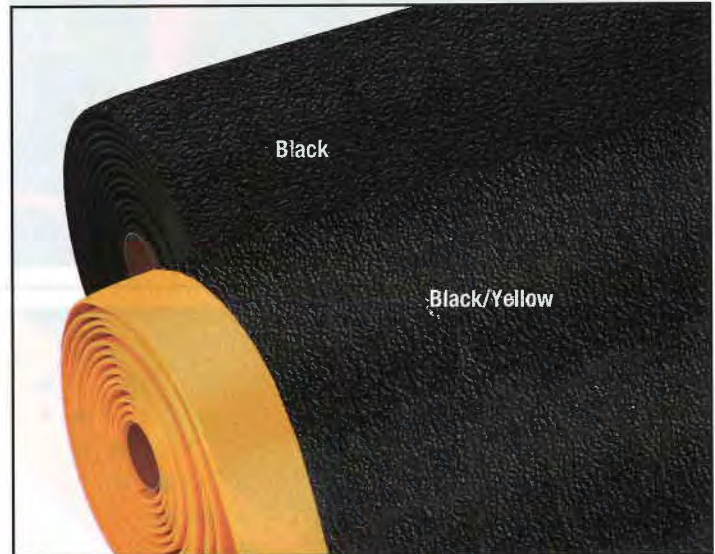
- Outperforms competitive products in tear resistance and tensile strength.
- Overall thickness is 3/8 inch.
- All four sides are beveled to minimize trip hazards.



Premium Anti-Fatigue Mats

Stock Number	Size	Thickness	Color
MAT251*	2' x 3'	3/8"	Black or Black/Yellow
MAT252*	2' x 4'	3/8"	Black or Black/Yellow
MAT253*	2' x 5'	3/8"	Black or Black/Yellow
MAT254*	2' x 6'	3/8"	Black or Black/Yellow
MAT255*	2' x 8'	3/8"	Black or Black/Yellow
MAT256*	2' x 10'	3/8"	Black or Black/Yellow
MAT257*	2' x 12'	3/8"	Black or Black/Yellow
MAT258*	2' x 60'	3/8"	Black or Black/Yellow
MAT259*	3' x 3'	3/8"	Black or Black/Yellow
MAT260*	3' x 4'	3/8"	Black or Black/Yellow
MAT261*	3' x 5'	3/8"	Black or Black/Yellow
MAT262*	3' x 6'	3/8"	Black or Black/Yellow
MAT263*	3' x 7'	3/8"	Black or Black/Yellow
MAT264*	3' x 8'	3/8"	Black or Black/Yellow
MAT265*	3' x 10'	3/8"	Black or Black/Yellow
MAT266*	3' x 12'	3/8"	Black or Black/Yellow
MAT267*	3' x 16'	3/8"	Black or Black/Yellow
MAT268*	3' x 60'	3/8"	Black or Black/Yellow
MAT269*	4' x 4'	3/8"	Black or Black/Yellow
MAT270*	4' x 6'	3/8"	Black or Black/Yellow
MAT271*	4' x 8'	3/8"	Black or Black/Yellow
MAT272*	4' x 10'	3/8"	Black or Black/Yellow
MAT273*	4' x 12'	3/8"	Black or Black/Yellow
MAT274*	4' x 60'	3/8"	Black or Black/Yellow

* Please specify Black or Black/Yellow.



Diamond Plate Anti-Fatigue Mats

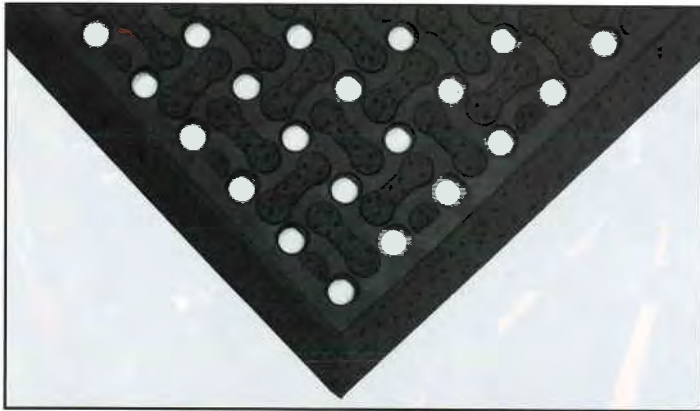
Durable vinyl mats feature ultra-soft cushioning and diamond pattern, anti-slip treads.

- Overall mat thickness is 5/16 inch.
- Sloped beveled foam on all four undersides affords easy access onto and off of mat.



Diamond Plate Anti-Fatigue Mats

Stock Number	Size	Thickness	Color
MAT285BY	3' x 5'	5/16"	Black/Yellow
MAT286BY	3' x 6'	5/16"	Black/Yellow
MAT287BY	3' x 8'	5/16"	Black/Yellow
MAT288BY	3' x 12'	5/16"	Black/Yellow
MAT289BY	3' x 16'	5/16"	Black/Yellow
MAT290BY	4' x 6'	5/16"	Black/Yellow
MAT291BY	4' x 8'	5/16"	Black/Yellow
MAT292BY	4' x 12'	5/16"	Black/Yellow



Anti-Slip Drainage Mat

Reversible anti-fatigue mat with molded-in beveled edges.

- Light-weight, good drainage.
- Excellent grease-resistant properties.
- May also be used as an outdoor entrance mat.

Anti-Slip Drainage Mat

Stock Number	Size	Thickness	Color
MAT301BK	3' x 5'	5/8"	Black



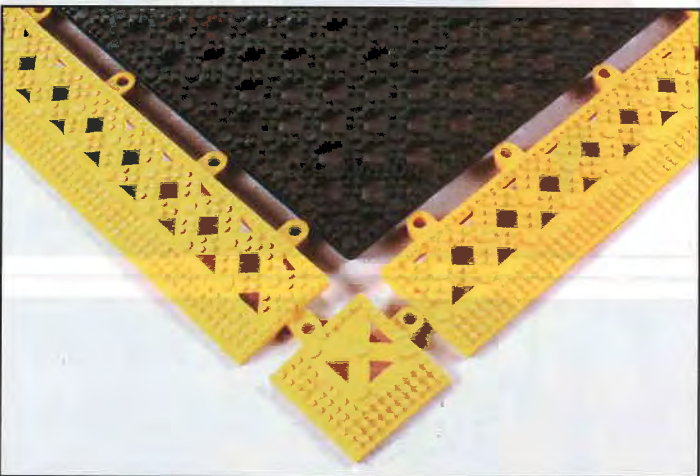
Safety Drainage Mats

Grease resistant rubber compound withstands industrial cutting oils and chemicals.

- Large hole configuration facilitates drainage and resists clogging while mini-diamond studs on top surface minimize slippage.
- Yellow beveled border is permanently affixed to the mat.

Safety Drainage Mats

Stock Number	Size	Thickness	Color
MAT310BY	26" x 40"	7/8"	Black/Yellow
MAT311BY	38" x 64"	7/8"	Black/Yellow
MAT312BY	38" x 124"	7/8"	Black/Yellow



Lok-Tyle™ Drainage Mats

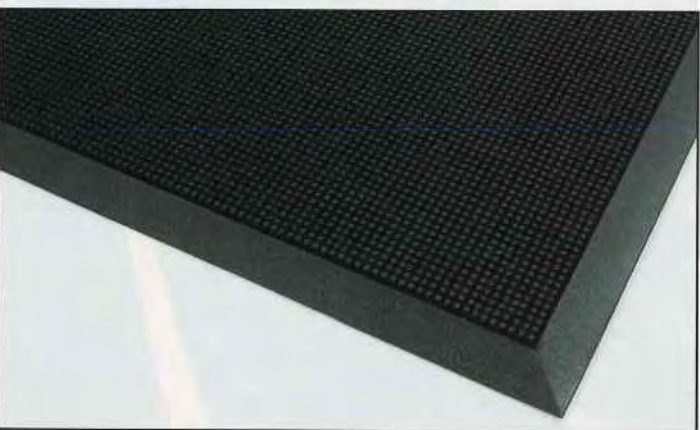
Modular cross-hatch vinyl tiles snap together on-site for custom configurations.

- Raised diamonds on top surface facilitate drainage and aids traction.
- Beveled ramps and corners complete the installation and minimize trip hazards.

Lok-Tyle™ Drainage Mats

Stock Number	Size	Thickness	Available Colors	Quantity Per Case
MAT320*	12" x 12" Tile	1/16"	Black, Blue or Yellow	4
MAT321*	2" x 12" Ramp	1/16"	Black, Blue or Yellow	4
MAT322*	2" x 2" Corner	1/16"	Black, Blue or Yellow	4

* Please specify Black, Blue or Yellow.



Rubberized Entry Mats

Tough, flexible rubber fingers sweep shoes clean while suction cups on underside help minimize shifting.

- Molded beveled edging on all four sides creates a moisture retention dam.
- Rubber stays flexible in extreme weather conditions.

Rubberized Entry Mats

Stock Number	Size	Thickness	Color
MAT330BK	32" x 39"	5/8"	Black
MAT331BK	36" x 72"	5/8"	Black

Economy Vinyl Carpet Mats

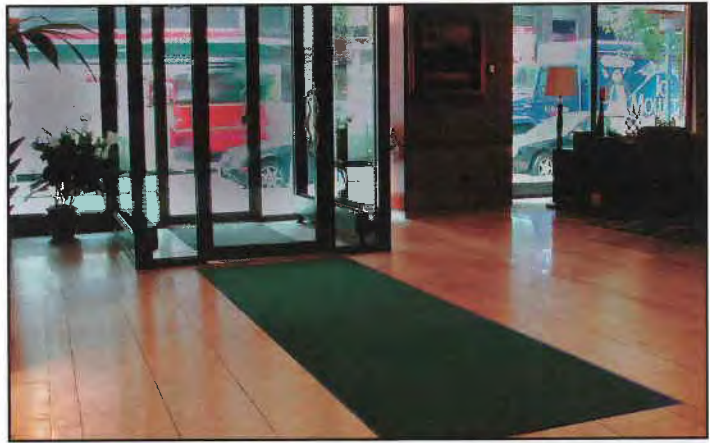
Use in entryways, lobbies and other light traffic areas.

- Non-slip vinyl backing.

Economy Vinyl Carpet Mats

Stock Number	Size	Thickness	Available Colors
MAT340*	2' x 3'	5/16"	Forest, Red, Blue, Charcoal or Brown
MAT341*	3' x 4'	5/16"	Forest, Red, Blue, Charcoal or Brown
MAT342*	3' x 5'	5/16"	Forest, Red, Blue, Charcoal or Brown
MAT343*	3' x 6'	5/16"	Forest, Red, Blue, Charcoal or Brown
MAT344*	3' x 8'	5/16"	Forest, Red, Blue, Charcoal or Brown
MAT345*	3' x 10'	5/16"	Forest, Red, Blue, Charcoal or Brown
MAT346*	3' x 12'	5/16"	Forest, Red, Blue, Charcoal or Brown
MAT347*	3' x 16'	5/16"	Forest, Red, Blue, Charcoal or Brown
MAT348*	3' x 60'	5/16"	Forest, Red, Blue, Charcoal or Brown
MAT349*	4' x 6'	5/16"	Forest, Red, Blue, Charcoal or Brown
MAT350*	4' x 8'	5/16"	Forest, Red, Blue, Charcoal or Brown
MAT351*	4' x 10'	5/16"	Forest, Red, Blue, Charcoal or Brown
MAT352*	4' x 60'	5/16"	Forest, Red, Blue, Charcoal or Brown

* Please specify Forest, Red, Blue, Charcoal or Brown.



Deluxe Vinyl Carpet Mats

Double rib, high/low design scrapes mud and dirt from shoes.

- Non-slip vinyl backing. Raised ribs run length of mat.

Deluxe Vinyl Carpet Mats

Stock Number	Size	Thickness	Available Colors
MAT380*	2' x 3'	3/8"	Charcoal, Red or Forest
MAT381*	3' x 4'	3/8"	Charcoal, Red or Forest
MAT382*	3' x 5'	3/8"	Charcoal, Red or Forest
MAT383*	3' x 6'	3/8"	Charcoal, Red or Forest
MAT384*	3' x 10'	3/8"	Charcoal, Red or Forest
MAT385*	4' x 6'	3/8"	Charcoal, Red or Forest

* Please specify Charcoal, Red or Forest.



Superior Vinyl Carpet Mats

Extremely long lasting mat.

- Heavyweight vinyl non-slip backing ensures minimum movement.
- Use indoors at main entranceways or any high traffic area.

Superior Vinyl Carpet Mats

Stock Number	Size	Thickness	Available Colors
MAT411*	2' x 3'	3/8"	Charcoal, Brown, Burgundy or Forest
MAT412*	3' x 4'	3/8"	Charcoal, Brown, Burgundy or Forest
MAT413*	3' x 5'	3/8"	Charcoal, Brown, Burgundy or Forest
MAT414*	3' x 6'	3/8"	Charcoal, Brown, Burgundy or Forest
MAT415*	3' x 10'	3/8"	Charcoal, Brown, Burgundy or Forest
MAT416*	4' x 6'	3/8"	Charcoal, Brown, Burgundy or Forest
MAT417*	4' x 8'	3/8"	Charcoal, Brown, Burgundy or Forest

* Please specify Charcoal, Brown, Burgundy or Forest.



Rubber Backed Carpet Mats

Raised border and deep channels trap moisture and debris.

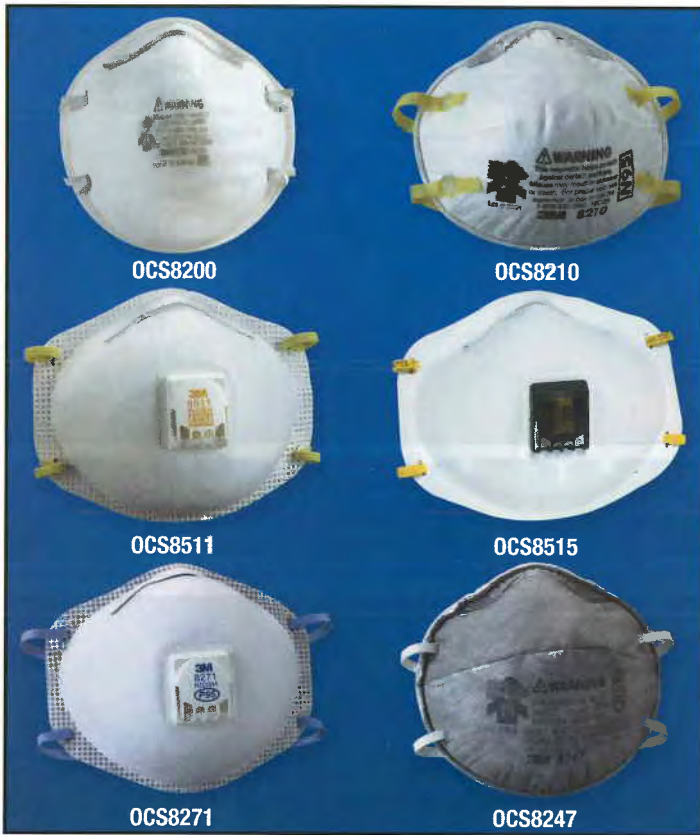
- Raised pattern scrapes dirt while non-slip rubber cleats hold firm.

Rubber Backed Carpet Mats

Stock Number	Size	Thickness	Available Colors
MAT400*	2' x 3'	1/4"	Medium Gray, Charcoal or Red/Black
MAT401*	3' x 4'	1/4"	Medium Gray, Charcoal or Red/Black
MAT402*	3' x 5'	1/4"	Medium Gray, Charcoal or Red/Black
MAT403*	3' x 10'	1/4"	Medium Gray, Charcoal or Red/Black
MAT404*	4' x 6'	1/4"	Medium Gray, Charcoal or Red/Black
MAT405*	4' x 10'	1/4"	Medium Gray, Charcoal or Red/Black

* Please specify Medium Gray, Charcoal or Red/Black.





3M Dust Masks/Respirators

8200 Economy Dust Respirator

- An economical choice for light-duty or short duration applications.
- Adjustable noseclip reduces eyewear fogging and ensures a better seal.
- Two strap design with single point attachment.
- Meets NIOSH 42 CFR 84 N95 requirements.

8210 Dust Respirator

- 95% efficiency against solid and liquid aerosols that do not contain oils.
- Adjustable noseclip reduces eyewear fogging and ensures a better seal.
- NIOSH approved N95.

8511 Dust Respirator with Valve

- 95% efficiency against solid and liquid aerosols that do not contain oils.
- Features the patented one-way 3M Cool Flow™ exhalation valve for cool, dry comfort.
- Adjustable M-noseclip provides a custom fit and secure seal.
- NIOSH approved N95.

8515 Welding Respirator with Valve

- The fiber media and protective layers are flame resistant.
- 95% efficiency against solid and liquid aerosols that do not contain oils.
- Features the patented one-way 3M Cool Flow™ exhalation valve for cool, dry comfort.
- Adjustable M-noseclip provides a custom fit and secure seal.
- NIOSH approved N95.

8271 Oil-Proof Respirator with Valve

- For heavy-duty use in dusty or oily environments.
- 95% efficiency against solid and liquid aerosols including oils.
- Features the patented one-way 3M Cool Flow™ exhalation valve for cool, dry comfort.
- Adjustable M-noseclip provides a custom fit and secure seal.
- NIOSH approved P95.

8247 Odor Respirator

- Odor removing, carbon layered filter material provides relief from nuisance levels of organic vapors.
- 95% efficiency against solid and liquid aerosols including oils.
- Adjustable noseclip reduces eyewear fogging and ensures a better seal.
- NIOSH approved R95.

3M Dust Masks/Respirators

Stock Number	3M Part Number	Description	Quantity Per Case
OCS8200	8200	Economy Dust Respirator	240
OCS8210	8210	Dust Respirator	160
OCS8511	8511	Dust Respirator with Valve	80
OCS8515	8515	Welding Respirator with Valve	80
OCS8271	8271	Oil-Proof Respirator with Valve	80
OCS8247	8247	Odor Respirator	120

3M Reusable Respirators

3M Half Face Reusable Respirators offer comfort and convenience coupled with the cost savings of a reusable respirator.

- Reusable - just dispose of the cartridge and filters when used to capacity.
- The swept back design of the cartridges improves balance and visibility.
- Can be disassembled, cleaned and reused.
- Very light-weight.
- Easy to adjust head straps.
- NIOSH approved N95.

3M Reusable Respirators

Stock Number	3M Part Number	Description	Quantity Per Case
OCS6200	6200	Half Face Respirator - Medium	24
OCS6300	6300	Half Face Respirator - Large	24
OCS6001	6001	Cartridge - Organic Vapor	60
OCS6003	6003	Cartridge -Organic Vapor/Acid Gas	60
OCS5N11	5N11	Filter - Particulate Air	100
OCS501	501	Filter Retainer	100



3M Safety Glasses

958B Tour-Guard™ III Protective Eyewear

- Can be worn alone or over most prescription eyeglasses.
- Meets the requirements of ANSI Z87.1-2003 and CSA Z94.3-2001.

11326 Virtua™ Clear Temples Protective Eyewear

- Lightweight lens weighs less than 1 ounce.
- Tough polycarbonate construction.
- Meets the requirements of ANSI Z87.1-2003 high impact.

11691 Virtua™ V7 Protective Eyewear

- Soft universal fit nosebridge.
- Hard-coated, polycarbonate lenses offer 99% UV protection.
- Meets ANSI Z87.1-2003.

334 Chemical Splash Goggles

- Protects against splashes and features indirect vents for air flow.
- Hard-coated, polycarbonate lenses offer 99% UV protection.
- Meets ANSI Z87.1-2003.



OCS1630



OCS1640



OCS1645



OCS1635

3M Safety Glasses

Stock Number	3M Part Number	Description	Quantity Per Case
OCS1630	958B	Tour-Guard™ III Eyewear	25
OCS1640	11326	Virtua™ Clear Temples Eyewear	10
OCS1645	11691	Virtua™ V7 Eyewear	10
OCS1635	334	Splash Proof Goggles	10

First Aid Kits

Quality Johnson & Johnson first aid kits.

Industrial Kit - 50 Person Capacity

- Ideal for use in offices, restaurants and warehouses.
- Blue metal case includes wall brackets and contains 225 items including:
 - 155 assorted BAND-AID® bandages
 - Antiseptic wipes
 - Burn creme
 - Eye pads
 - First aid tape
 - Gauze pads
 - Scissors
 - Surgical wound dressing
 - Triangular bandages
 - Tweezers
 - Tylenol
 - First aid guide

Industrial Nonmedicinal Kit - 25 Person Capacity

- The name you trust at home and in the workplace.
- White metal case includes wall brackets and contains 87 items including:
 - 50 assorted BAND-AID® bandages
 - Antiseptic wipes
 - Elastic bandage
 - Eye pads
 - First aid tape
 - Gauze pads
 - Gloves
 - Instant cold pack
 - Non-stick pads
 - Scissors
 - Triangular bandages
 - Tweezers
 - First aid guide

Weatherproof Kit - 25 Person Capacity

- Snap-in internal organizational system.
- Durable plastic case with mounting tabs and contains 160 items including:
 - 84 assorted BAND-AID® bandages
 - Antibiotic ointment
 - Antiseptic wipes
 - Burn creme
 - Elastic bandage
 - Eye pads
 - First aid tape
 - Gauze pads
 - Gloves
 - Instant cold pack
 - Non-stick pads
 - Scissors
 - Surgical wound dressing
 - Triangular bandages
 - Tweezers
 - Tylenol
 - First aid guide



First Aid Kits

Stock Number	Description	Capacity	Quantity Per Case
OCS2127	Industrial Kit	50 Person	1
OCS2126	Industrial Nonmedicinal Kit	25 Person	1
OCS2125	Weatherproof Kit	25 Person	1

3M Disposable Ear Plugs

1100 & 1110 Disposable Foam Ear Plugs

- Smooth, dirt resistant surface.
- Tapered design fits the ear canal and provides added comfort and hygiene.
- Noise reduction rating: 29dB.
- Each pair is individually packaged for easy distribution to workers.

311 & 312 E-A-Rsoft™ Yellow Neons™

- Special, soft and smooth foam formulation with the highest noise reduction rating available.
- Soft foam plugs are easy to roll down and insert, then expand within the ear canal for maximum comfort.
- Noise reduction rating: 33dB.
- Non-irritating, dermatologically safe foam.

310 E-A-R™ Classic™ in Pillow Pak

- Slow-recovery foam helps ensure comfort and minimize pressure.
- Bright yellow color provides a quick visual compliance check.
- Noise reduction rating: 29dB.
- Our convenient pillow pak keeps each pair clean and available for re-use.

340 E-A-R™ UltraFit™

- Curved flange design gently hugs the ear canal to provide an effective seal protecting against noise.
- No rolling or sizing needed to get a comfortable, protective fit.
- Noise reduction rating: 25dB.
- Hypoallergenic polymer is washable and reusable.



3M Disposable Foam Ear Plugs

Stock Number	3M Part Number	Description	Pairs Per Case
OCS1100	1100	Foam Ear Plugs	1,000
OCS1110	1110	Foam Ear Plugs - Corded	500
OCS1135	312	E-A-Rsoft™ Yellow Neons™	200
OCS1136	311	E-A-Rsoft™ Yellow Neons™ Corded	200
OCS1137	310	E-A-R™ Classic™ in Pillow Pak	200
OCS1138	340	E-A-R™ UltraFit™	100



3M Ear Plug Dispenser & Refills

1000 E-A-R™ One Touch™ Dispenser

- Reusable base and dispensing unit.
- Highly visible dispenser helps remind workers to wear hearing protection.
- Versatile design includes tabletop or wall-mount options.
- Earplugs sold separately.

1001 E-A-R™ Classic™ Refill

- Includes 500 pairs of 3M 310 E-A-R™ Classic™ Ear Plugs.

1004 E-A-Rsoft™ Yellow Neons™ Refill

- Includes 500 pairs of 3M 312 E-A-Rsoft™ Yellow Neon™ Ear Plugs.

3M Ear Plug Dispenser & Refills

Stock Number	3M Part Number	Description	Quantity Per Case
OCS1145	1000	E-A-R™ One Touch™ Dispenser	1
OCS1139	1001	E-A-R™ Classic™ Refill	500 Pairs
OCS1140	1004	E-A-Rsoft™ Yellow Neons™ Refill	500 Pairs



3M Ear Muffs

1401 Peltor™ Optime™ Headband Earmuff

- Padded ear cups provide excellent sound insulation and are recommended for high noise situations.
- One of the most versatile earmuffs in the industry today.
- Noise Reduction Rating: 25dB.

1405 E-A-R™ Earmuffs

- Muffs can be worn over the head, behind the head or under the chin.
- Recommended for high noise situations.
- Noise Reduction Rating: 26dB behind the head.

3M Ear Muffs

Stock Number	3M Part Number	Description	Quantity Per Case
OCS1401	1401	Peltor™ Optime™ 98 Earmuff	2
OCS1405	1405	E-A-R™ Earmuffs	2

Back Support Belts

Universal Waist

- Mesh body with elastic back support.
- Double closure system with detachable 1½" wide suspenders.

Lumbar Pad

- Double closure system with detachable 1½" wide suspenders.
- Power knit nylon/elastic body.
- Firm lumbar pad support.

Back Support Belts

Stock Number	Description	Waist Size	Width	Color	Quantity Per Case
BSB101S	Universal Waist - Regular	26-48"	8"	Black	1
BSB104S	Lumbar Pad - Small	24-33"	8"	Black	1
BSB104M	Lumbar Pad - Medium	29-38"	8"	Black	1
BSB104L	Lumbar Pad - Large	35-44"	8"	Black	1
BSB104X	Lumbar Pad - X-Large	42-52"	8"	Black	1
BSB104XL	Lumbar Pad - XX-Large	46-56"	8"	Black	1



BSB101



BSB104

Fall Protection

Body Belt

- Nylon Body Belt with tongue buckle, two "D" rings and 3" back pad.

Harness

- Non-stretch, nylon webbing is light-weight and durable.
- "Fall Indicator/Warning Flag" indicates a fall has occurred.

Shock Absorbing Lanyard

- Nylon web construction and two locking snap hook connections.
- "Fall Indicator/Warning Flag" indicates a fall has occurred.
- Maximum load 310 lbs.

Retractable Lanyard

- Easily retracts and extends like a seat belt for maximum flexibility.
- Maximum load 310 lbs.

Fall Protection

Stock Number	Description	Size	Quantity Per Case
BSF101S	Belt - Small	32-40" Waist	1
BSF101M	Belt - Medium	36-44" Waist	1
BSF101L	Belt - Large	42-48" Waist	1
BSF101X	Belt - X-Large	44-52" Waist	1
BSF103	Harness - Universal Waist	36-52" Waist	1
BSF102	Shock Absorbing Lanyard	6'	1
BSF104	Retractable Lanyard	10'	1



BSF101



BSF103



BSF102



BSF104

Warehouse Work Belt

Heavy-duty, nylon work belt keeps important tools close by for quick access. Waist belt is adjustable up to 56".

- Accessories sold separately.



WB4501



WB4504



WB4502



WB4503



WB4505

Warehouse Work Belt

Stock Number	Description	Quantity Per Case
WB4501	Warehouse Work Belt w/Tape Gun & Knife Pouches	1
WB4502	Knife Utility Pouch	1
WB4503	Packing List Pouch	1
WB4504	Phone Pouch	1
WB4505	Fanny Pack for Work Belt	1



Warehouse Gloves

(A) String Knit Cotton Gloves

- Use to keep workers hands warm.
- Poly/cotton blend offers longer wear life than cotton alone.
- Can also be used as liners.

(B) PVC Dot Knit Gloves

- PVC dots provide superior grip.
- Ambidextrous - PVC dots on both sides.
- Poly/cotton blend.

(C) 100% Jersey Cotton Gloves

- Ideal for assembly work, cleanup and general use.
- Form fitting.
- Medium-weight.

(D) Cotton Inspection Gloves

- Form fitting and highly sensitive. Washable.
- Ultra light-weight 100% cotton blend, bleached white.

(E) Rubber Coated Palm Gloves

- Latex coating offers superior grip and improved cut, abrasion and puncture resistance.
- Flexible and comfortable for improved dexterity.
- Formed knit shell.

(F) Leather Palm with Knit Wrist Gloves

- All weather protection.
- Full cotton back makes gloves cooler and more comfortable.
- Straight thumb.

(G) Leather Palm with Safety Cuff Gloves

- Safety cuff provides wrist protection from cuts, scrapes or abrasions.
- Select shoulder split leather.
- Wing thumb.

(H) Leather Drivers Gloves

- Keeps hands warm.
- Keystone thumb.
- Bound hem.

Warehouse Gloves

Stock Number	Description	Available Sizes	Pairs Per Case
GLV1010L	(A) String Knit Cotton Gloves	L	60
GLV1011*	(B) PVC Dot Knit Gloves	S,L	60
GLV1012L	(C) 100% Jersey Cotton Gloves	L	72
GLV1013*	(D) Cotton Inspection Gloves	S,L	144
GLV1014*	(E) Rubber Coated Palm Gloves	M,L,XL	24
GLV1020L	(F) Leather Palm w/Knit Wrist Gloves	L	48
GLV1021L	(G) Leather Palm w/Safety Cuff Gloves	L	24
GLV1022L	(H) Leather Drivers Gloves	L	24

* Please state size.



3M XLR8™ Hard Hats

These premium hard hats provide both safety and comfort.

- Cushioned brow pad absorbs moisture to keep wearer cool & comfortable.
- Six point ratchet suspension is designed not to slip in the most physically active jobs or extreme weather conditions.
- Meets ANSI Z89.1-2003, Type 1, Class C, E and G requirements.

3M XLR8™ Hard Hats

Stock Number	Description	Color	Quantity Per Case
OCS1920	3M XLRB™ Hard Hat 6PT Ratchet	White	4
OCS1921	3M XLRB™ Hard Hat 6PT Ratchet	Yellow	4
OCS1922	3M XLRB™ Hard Hat 6PT Ratchet	Orange	4
OCS1923	3M XLRB™ Hard Hat 6PT Ratchet	Red	4
OCS1924	3M XLRB™ Hard Hat 6PT Ratchet	Blue	4

Premium Pre-Curved Work Gloves

(A) Half-Finger Lifter's Gloves with Foam Padding

- Foam padding, hook & loop closure and Spandex® backing.

(B) Half-Finger Impact Gloves

- Visco-polymer padding, hook & loop closure and Spandex® backing.

(C) Half-Finger Impact Gloves with Wrist Support

- Visco-polymer padding, hook & loop closure, Spandex® backing and elastic wrist wrap.

(D) Half-Finger Thumb Web Impact Gloves

- Thumb web padding, hook & loop closure and Spandex® backing.



Premium Pre-Curved Work Gloves

Stock Number	Description	Available Sizes	Pairs Per Case
GLV1025*	(A) Lifter's Gloves w/Foam Padding	S,M,L,XL	2
GLV1027*	(B) Impact Gloves	S,M,L,XL	2
GLV1028*	(C) Impact Gloves w/Wrist Support	S,M,L,XL	2
GLV1029*	(D) Thumb Web Impact Gloves	S,M,L,XL	2

* Please state size.

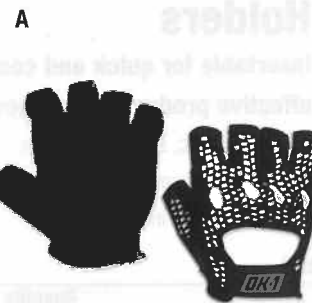
Mesh Backed Lifting Gloves

(A) Black Mesh Backed Lifting Gloves

- Half-finger black cotton mesh backed, padded palm, hook & loop closure.

(B) White Mesh Backed Lifting Gloves

- Half-finger white cotton mesh backed, padded palm, hook & loop closure.



Mesh Backed Lifting Gloves

Stock Number	Description	Available Sizes	Pairs Per Case
GLV1031*	(A) Black Mesh Backed Lifting Gloves	S,M,L,XL	2
GLV1032*	(B) White Mesh Backed Lifting Gloves	S,M,L,XL	2

* Please state size.

Cut Resistant Gloves

(A) Handguard II®

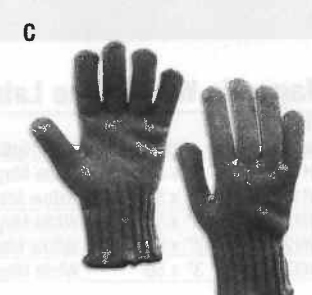
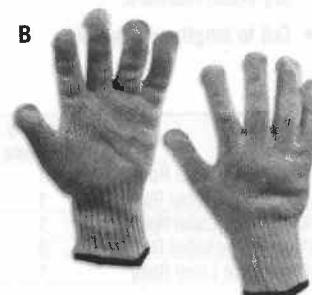
- Heavy-duty cut protection, slip resistance and comfort.
- Patented combination of Kevlar®, Spectra® and stainless steel.
- Ambidextrous design.

(B) Knifehandler

- The original knife hand glove for the meat industry.
- Heavy-duty. Highest ratio of cut protection to thickness available.
- Ambidextrous design.

(C) Guardsman Plus®

- Heavy-duty patented combination of Vectran® and stainless steel.
- Heat protection up to 300° F.
- Ambidextrous design.



Cut Resistant Gloves

Stock Number	Description	Available Sizes	Gloves Per Case
GLV1040*	(A) Handguard II®	M,L,XL	4
GLV1041*	(B) Knifehandler	M,L,XL	4
GLV1042*	(C) Guardsman Plus®	M,L,XL	4

* Please state size.



Open-Edge™ Plastic Label Holders

The best value for high volume applications.

- Top loading design can be cut to desired length.
- Self-adhesive backing.
- White inserts included.

Open-Edge™ Plastic Label Holders

Stock Number	Size	Description	Quantity Per Case
LH101	½" x 6"	Self-Adhesive Plastic Label Holders	50
LH102	1" x 3"	Self-Adhesive Plastic Label Holders	50
LH103	1" x 6"	Self-Adhesive Plastic Label Holders	50
LH104	2" x 6"	Self-Adhesive Plastic Label Holders	50
LH105	3" x 5"	Self-Adhesive Plastic Label Holders	50



Superscan® Press-On Vinyl Envelopes

Extra large size is great for pallet rack applications.

- Magnetic holder allows for easy label relocation.
- Clear, matte, side load design.
- White insert sheets for laser/inkjet printing included.

Superscan® Press-On Vinyl Envelopes

Stock Number	Size	Description	Quantity Per Case
LH140	3" x 5"	Self-Adhesive Press-On Vinyl Envelopes	50
LH141	3" x 5"	Magnetic Vinyl Envelopes	50
LH142	4" x 6"	Self-Adhesive Press-On Vinyl Envelopes	50
LH143	4" x 6"	Magnetic Vinyl Envelopes	50



Hol-Dex® Plastic Label Holders

Insertable for quick and cost effective product ID changes.

- Clear plastic, side load design.
- Won't crack, peel, fade or fall off.
- White inserts included.

Hol-Dex® Plastic Label Holders

Stock Number	Size	Description	Quantity Per Case
LH110	½" x 6"	Self-Adhesive Plastic Label Holders	12
LH111	¾" x 6"	Self-Adhesive Plastic Label Holders	12
LH112	1" x 6"	Self-Adhesive Plastic Label Holders	12
LH113	2" x 6"	Self-Adhesive Plastic Label Holders	12
LH114	1" x 6"	Magnetic Plastic Label Holders	12
LH115	2" x 6"	Magnetic Plastic Label Holders	12



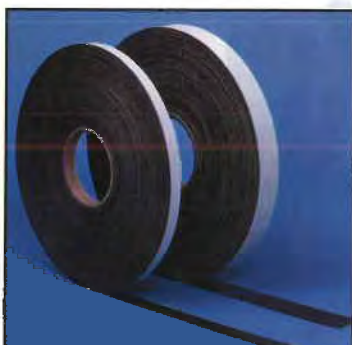
Wire-Rac™ Snap-On Label Holders

The solution for labeling wire shelving!

- Snaps on for a perfect fit.
- Clear plastic designed to fit any 1¼"-1½" face.
- White inserts included.

Wire-Rac™ Snap-On Label Holders

Stock Number	Size	Description	Quantity Per Case
LH150	3"	Clear Snap-On Label Holders	25
LH151	6"	Clear Snap-On Label Holders	25
LH152	1¼" x 6"	White Paper Laser Inserts	400



Magnetic Warehouse Labels

Write on/wipe off feature makes renaming inventory location quick and easy.

- Reusable. Mark with wet or dry erase markers.
- Cut to length with scissors.

Magnetic Warehouse Labels

Stock Number	Size	Description	Quantity Per Case
LH120	1" x 50'	White Magnetic Warehouse Label Rolls	1
LH121	1" x 50'	Yellow Magnetic Warehouse Label Rolls	1
LH122	2" x 50'	White Magnetic Warehouse Label Rolls	1
LH123	2" x 50'	Yellow Magnetic Warehouse Label Rolls	1
LH124	3" x 50'	White Magnetic Warehouse Label Rolls	1



Slip-Strip™ Label Holder Strips

Change labels as often as necessary without messy adhesive build-up.

- Use scissors to cut to length.
- Inserts not included.

Slip-Strip™ Label Holder Strips

Stock Number	Size	Description	Quantity Per Case
LH160	¾" x 36"	Self-Adhesive Label Holder Strips	6
LH161	1" x 36"	Self-Adhesive Label Holder Strips	6
LH162	1" x 48"	Self-Adhesive Label Holder Strips	6
LH163	1¼" x 48"	Self-Adhesive Label Holder Strips	6
LH164	2" x 48"	Self-Adhesive Label Holder Strips	6
LH165	3" x 48"	Self-Adhesive Label Holder Strips	6

QuickBlade® Utility Knife

- Ergonomic handle with release knob for quick blade change.
- Retractable model features rubber grip.
- Duratip® blade has blunted tips to help reduce puncture wounds.



QuickBlade® Utility Knife

Stock Number	Description	Style	Includes	Quantity Per Case
KN110	QuickBlade® Utility Knife	Retractable	Duratip® Blade	10
KN111	QuickBlade® Utility Knife	Fixed	Duratip® Blade	10
KN210	Standard Utility Blades			100
KN212	Duratip® Safety Utility Blades			100

Standard Utility Knife

- Constructed from high quality die cast metal.
- Ergonomic handle.
- Overlock nose for blade stability.



Standard Utility Knife

Stock Number	Description	Style	Includes	Quantity Per Case
KN115	Standard Utility Knife	Retractable	3 Standard Blades	10
KN210	Standard Utility Blades			100
KN212	Duratip® Safety Utility Blades			100

13 Pt. Steel Track® Snap Utility Knife

- Rugged plastic and steel construction.
- Uses 13 cutting point snap blades.
- Automatic lock.
- #KN118 features a rubber grip.



13 Point Steel Track® Snap Utility Knife

Stock Number	Description	Style	Includes	Quantity Per Case
KN118	Steel Track® Snap Knife w/Grip	Retractable	3 Snap Blades	50
KN119	Steel Track® Snap Knife	Retractable	3 Snap Blades	50
KN218	13 pt. Snap Blades			250

Economy Steel Box Cutter

- All metal construction.
- Easy blade change.
- Glossy painted finish.

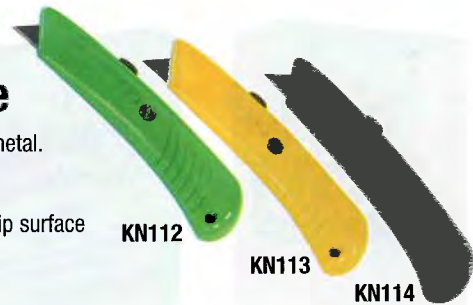


Economy Steel Box Cutter

Stock Number	Description	Style	Includes	Quantity Per Case
KN122	Economy Steel Box Cutter	Retractable	Single Edge Blade	12
KN222	Single Edge Blades	13 Point		100

Safety Grip Utility Knife

- High quality die cast metal.
- Ergonomic handle.
- Features a non-slip grip surface to reduce slippage.



Safety Grip Utility Knife

Stock Number	Description	Style	Includes	Quantity Per Case
KN112	Green Safety Grip Utility Knife	Retractable	5 Duratip® Blades	10
KN113	Yellow Safety Grip Utility Knife	Retractable	Standard Blade	10
KN114	Gray Safety Grip Utility Knife	Retractable	Standard Blade	10
KN210	Standard Utility Blades			100
KN212	Duratip® Safety Utility Blades			100

S4™ Safety Cutter Utility Knife

- Comfortable ergonomic handle.
- Rugged steel safety guide.
- Top cut and 2 tray cut positions.
- Available in left or right-handed models.



S4™ Safety Cutter Utility Knife

Stock Number	Description	Style	Includes	Quantity Per Case
KN116	S4™ Safety Cutter Utility Knife	Right	Safety Point Blade	12
KN117	S4™ Safety Cutter Utility Knife	Left	Safety Point Blade	12
KN216	Safety Point Blades			100

8 Pt. Steel Track® Snap Utility Knife

- Constructed from sturdy plastic and steel.
- Uses 8 cutting point snap blades.
- Automatic lock.
- #KN120 features a rubber grip.



8 Point Steel Track® Snap Utility Knife

Stock Number	Description	Style	Includes	Quantity Per Case
KN120	Steel Track® Snap Knife w/Grip	Retractable	3 Snap Blades	25
KN121	Steel Track® Snap Knife	Retractable	3 Snap Blades	25
KN220	8 Pt. Snap Blades			100

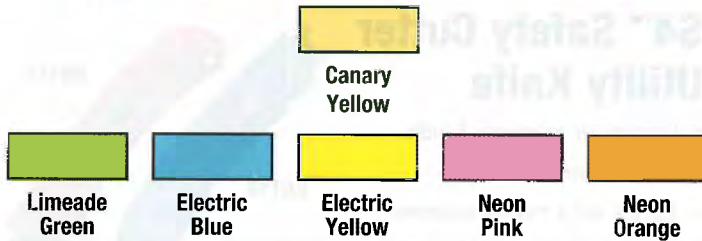
Scraper Knife

- Heavy-duty metal construction.
- Brass slider locks blade into position.
- Jam-proof button.



Scraper Knife

Stock Number	Description	Style	Includes	Quantity Per Case
KN123	Metal Scraper Knife	Retractable	Single Edge Blade	50
KN222	Single Edge Blades	13 Point		100



Post-it® Super Sticky Notes

Revolutionary adhesive technology ensures your notes will stick securely to more surfaces.

- Ideal for vertical and hard-to-stick surfaces like monitors, walls, dashboards and corrugated boxes.
- Perfect for when you need your message to get noticed!
- Large format sizes and bright neon colors provide maximum visibility.
- Assorted neon packs may contain: limeade green, electric blue, electric yellow, neon pink or neon orange.

Post-it® Super Sticky Notes - Plain

Stock Number	Size	Color	Printing	Sheets Per Pad	Pads Per Pack	Packs Per Case
PT3M101	3" x 3"	Canary Yellow	Plain	90	12	18
PT3M102	3" x 3"	Assorted Neon	Plain	90	5	24
PT3M103	6" x 4"	Assorted Neon	Plain	45	8	12
PT3M104	8" x 6"	Assorted Neon	Plain	45	4	12

Post-it® Super Sticky Notes - Ruled

Stock Number	Size	Color	Printing	Sheets Per Pad	Pads Per Pack	Packs Per Case
PT3M111	4" x 4"	Canary Yellow	Ruled	90	6	12
PT3M113	4" x 6"	Canary Yellow	Ruled	90	5	8
PT3M114	4" x 6"	Assorted Neon	Ruled	90	3	12



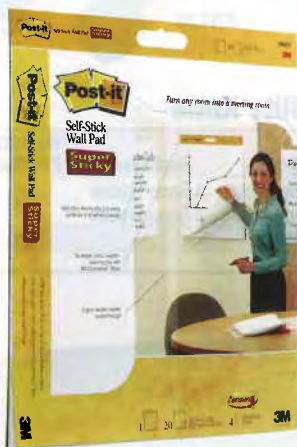
Post-it® Super Sticky Cards

Restickable cards you can display or store.

- Stick and stay stuck!
- Sturdy and easy to carry with you wherever you go.
- Great for writing, posting and storing information you use regularly.

Post-it® Super Sticky Cards - Ruled

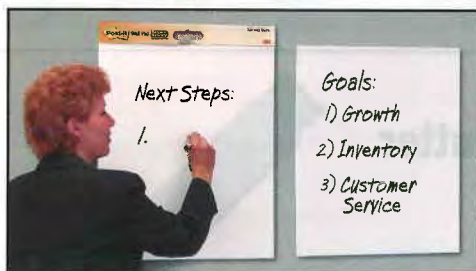
Stock Number	Size	Color	Printing	Cards Per Pad	Pads Per Case
PT3M131	3" x 5"	White	Ruled	50	48
PT3M133	4" x 3"	White	Ruled	50	48



Post-it® Self-Stick Pads

Perfect for meetings, training and brainstorming sessions.

- Bleed-through resistant paper pulls off cleanly and easily.
- Adhesive backed sheets stick to most wall surfaces.
- Table Top Pads feature a built-in stand that sets up in seconds.



Post-it® Self-Stick Pads

Stock Number	Size	Description	Color	Sheets Per Pad	Pads Per Case
PT3M566	20" x 23"	Self-Stick Wall Pads	White	20	6
PT3M563	20" x 23"	Self-Stick Table Top Easel Pads	White	20	6

Sharpie® Markers

The industry standard pen style permanent marker!

- Marks on most surfaces.
- Fade and water resistant ink.
- Quick drying alcohol based ink.
- Non toxic.
- Useful for industrial, retail and home applications.

Sharpie® Fine Point Markers

- Long lasting fine point tip.
- Use to mark on CDs and labels.

Super Sharpie® Markers

- Long lasting, bold, fine point tip.
- Marks most hard-to-write surfaces.



Sharpie® Markers

Stock Number	Ink Color	Tip	Quantity Per Case
MK301	Black	Fine	12
MK302	Blue	Fine	12
MK303	Green	Fine	12
MK304	Red	Fine	12
MK305	Black	Bold Fine	12
MK306	Blue	Bold Fine	12
MK307	Green	Bold Fine	12
MK308	Red	Bold Fine	12

Marsh® 88 Valve Markers

The industry's best-selling disposable valve marker!

- Contains 35-74% more ink than most markers.
- Long lasting tip.

Porous Surface Markers

- Makes bold, fast-drying, waterproof marks.
- Good for general marking on corrugated, wood and other porous surfaces.
- Contains dye-type ink.

Non-Porous Surface Markers

- Makes permanent, weatherproof, fast-drying opaque marks on glass, poly and other non-porous surfaces.
- Contains pigmented ink.



Marsh® 88 Valve Markers

Stock Number	Ink Color	Tip	Quantity Per Case
MK101	Black	Porous	12
MK102	Blue	Porous	12
MK103	Green	Porous	12
MK104	Red	Porous	12
MK110	Black	Non-Porous	12
MK111	White	Non-Porous	12
MK112	Yellow	Non-Porous	12

Sharpie® Pallet Markers

Industrial strength for big marking jobs!

- Marks on wet and oily surfaces.
- Durable aluminum barrel and felt tip stand up to heavy use.
- Water resistant ink dries quickly.

Sharpie® King Size™ Markers

- Excellent for marking corrugated, wood, metal, foil, plastic and leather.

Sharpie® Magnum® Markers

- Oversized felt chisel tip for extra-wide, highly visible marks.



Sharpie® Pallet Markers

Stock Number	Ink Color	Tip	Quantity Per Case
MK401	Black	King Size™	12
MK402	Blue	King Size™	12
MK403	Red	King Size™	12
MK404	Black	Magnum®	12
MK405	Blue	Magnum®	12
MK406	Red	Magnum®	12

Mean Streak®

Permanent marking stick.

- Non-refillable barrel holds large ink supply.
- Use to mark on non-porous surfaces like concrete, glass and metal.



Mean Streak®

Stock Number	Ink Color	Tip	Quantity Per Case
MK501	Black	Broad	12
MK502	Red	Broad	12
MK503	Yellow	Broad	12
MK504	White	Broad	12

Sharpie Accent® Highlighters

Specially formulated ink resists smearing on many ink jet printer and ball point pen inks.

- Easy gliding chisel tip delivers a smooth highlighting experience on wide and narrow lines of text.
- Quick drying, odorless and AP certified non-toxic ink.



Sharpie Accent® Highlighters

Stock Number	Ink Color	Tip	Quantity Per Case
MK601	Yellow	Chisel	12
MK602	Fluorescent Yellow	Chisel	12
MK603	Pink	Chisel	12
MK604	Fluorescent Green	Chisel	12
MK605	Fluorescent Orange	Chisel	12

Marsh® Stencil Machine

Corrosion resistant cutting edges quickly cut characters onto oil boards.

- Accurate automatic spacing.
- 18 month manufacturer warranty.



Marsh® Stencil Machines

Stock Number	Description	Line Capacity	Characters Per Foot
STMA12	½" Stencil Machine	6	23
STMA34	¾" Stencil Machine	4	16
STMA01	1" Stencil Machine	4	14

Marsh® Fountain Inks

All Marsh® inks are permanent, waterproof, light resistant and fast drying.

- K-1 ink marks porous surfaces such as corrugated, cloth, wood and paper.
- Rolmark ink marks on any porous or non-porous surface.

Marsh® K-1 Fountain Roller Kit contains:

- 1 Quart Black K-1 Stencil Ink
- 1 K-1 Fountain Roller
- 1 K-1 Roller Cover

Marsh® Rolmark Fountain Roller Kit contains:

- 1 Quart Black Rolmark Stencil Ink
- 1 Rolmark Fountain Roller
- 1 Rolmark Roller Cover

Marsh® K-1 Ink Products: Porous Surface

Stock Number	Description
STMA40	K-1 Fountain Roller Kit
STMA41	K-1 Fountain Roller
STMA42	K-1 Replacement Roller
STMA43	K-1 Fountain Brush w/Cover

Marsh® Rolmark Ink Products: All Surfaces

Stock Number	Description
STRO40	Rolmark Fountain Roller Kit
STRO41	Rolmark Fountain Roller
STRO42	Rolmark Replacement Roll

Marsh® Oil Boards

High-quality oil treated paperboard.

- Resists ink bleed-through for clean, sharp marks on stenciling applications.
- Oils in the paperboard lubricate the punches each time a character is cut.



Marsh® Oil Boards

Stock Number	Size	Quantity Per Case	Stock Number	Size	Quantity Per Case
STOB0516	5" x 16"	1,175	STOB6524	6½" x 24"	620
STOB0520	5" x 20"	920	STOB0720	7" x 20"	650
STOB0616	6" x 16"	975	STOB0724	7" x 24"	540
STOB0620	6" x 20"	785	STOB1124	11" x 24"	335
STOB0624	6" x 24"	650	STOB1136	11" x 36"	255
STOB6520	6½" x 20"	720	STOB2436	24" x 36"	108

Marsh® Spray Inks

Quality spray inks work on all surfaces.

- Convenient 11 ounce cans.
- Permanent, waterproof, fast drying, lead-free ink.



Marsh® Spray Inks

Stock Number	Color	Cans Per Case
STSBK	Black	12
STSBLU	Blue	12
STSGRE	Green	12
STSORA	Orange	12

Stock Number	Color	Cans Per Case
STSRED	Red	12
STSWHI	White	12
STSYEL	Yellow	12
MASKK	Tan	12



K-1 Ink



K-1 Fountain Roller Kit



Rolmark Ink



Rolmark Fountain Roller Kit

Stock Number	Description
STMA44	K-1 Replacement Brush Tip
STMA45	Quart of Black K-1 Ink
STMA46	Gallon of Black K-1 Ink
STMA47	Quart of K-1 Solvent & Cleaner

Stock Number	Description
STRO43	Quart of Black Rolmark Ink
STRO44	Gallon of Black Rolmark Ink
STRO45	Quart of Rolmark Solvent & Cleaner

Brass Stencils

Letter/Number 45 piece set contains:

- ABCDEFGHIJKLMNOPQRSTUVWXYZ&.
- 1234567890.
- 1-beginner, 1-plain ender, 1-period ender, 2-spacer, 1-comma, 1-period, 1-dash.

Number Only 15 piece set contains:

- 12345678900.
- 1-beginner, 1-plain ender, 1-period, 1-dash.



Letter/Number

Stock Number	Size	Pieces Per Set
STBLN1	1"	45
STBLN2	2"	45
STBLN3	3"	45

Number Only

Stock Number	Size	Pieces Per Set
STBN10	1"	15
STBN20	2"	15
STBN30	3"	15

Plastic Truck Seals

Plastic Truck Seals provide indication of tampering or theft.

- Consecutively numbered, plastic, one-piece construction.



Plastic Truck Seals

Stock Number	Description	Color	Quantity Per Case
SE1027	¾" x 7½" Plastic Truck Seals	Yellow	100
SE1028	¾" x 7½" Plastic Truck Seals	White	100
SE1029	¾" x 7½" Plastic Truck Seals	Blue	100
SE1030	¾" x 7½" Plastic Truck Seals	Red	100
SE1031	¾" x 7½" Plastic Truck Seals	Green	100

SnapTracker Bolt Seals

Barrier class seal for high value cargo.

- Consecutively numbered, solid steel bolt is C-TPAT compliant.
- Meets ISO17712 high security standards.



SnapTracker Bolt Seals

Stock Number	Description	Color	Quantity Per Case
SE1032	"Snapper Bolt" Truck Seals	Yellow	50
SE1033	"Snapper Bolt" Truck Seals	Red	50
SE1034	"Snapper Bolt" Truck Seals	Light Blue	50

Pull-Tight Seals

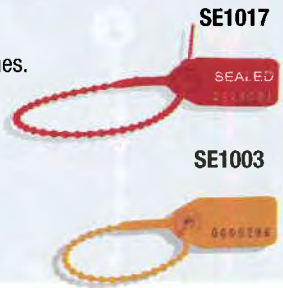
- Consecutively numbered, plastic, one-piece construction.

Equilok Pull-Tight Seals

- Medium-duty.
- Fits most locking rings and equipment latches.

Tug Tight Pull-Tight Seals

- Heavy-duty.
- Strong, versatile and easy-to-use.



Equilok Pull-Tight Seals

Stock Number	Description	Color	Quantity Per Case
SE1017	10" "Equilok" Pull-Tight Seals	Red	1,000
SE1018	10" "Equilok" Pull-Tight Seals	Blue	1,000

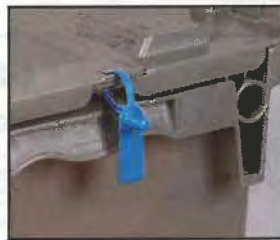
Tug Tight Pull-Tight Seals

Stock Number	Description	Color	Quantity Per Case
SE1001	9" "Tug Tight" Pull-Tight Seals	Green	100
SE1002	9" "Tug Tight" Pull-Tight Seals	Blue	100
SE1003	9" "Tug Tight" Pull-Tight Seals	Yellow	100
SE1004	9" "Tug Tight" Pull-Tight Seals	Red	100
SE1005	12" "Tug Tight" Pull-Tight Seals	Green	100
SE1006	12" "Tug Tight" Pull-Tight Seals	Blue	100
SE1007	12" "Tug Tight" Pull-Tight Seals	Yellow	100
SE1008	12" "Tug Tight" Pull-Tight Seals	Red	100
SE1009	15" "Tug Tight" Pull-Tight Seals	Green	100
SE1010	15" "Tug Tight" Pull-Tight Seals	Blue	100
SE1011	15" "Tug Tight" Pull-Tight Seals	Yellow	100
SE1012	15" "Tug Tight" Pull-Tight Seals	Red	100
SE1013	18" "Tug Tight" Pull-Tight Seals	Green	100
SE1014	18" "Tug Tight" Pull-Tight Seals	Blue	100
SE1015	18" "Tug Tight" Pull-Tight Seals	Yellow	100
SE1016	18" "Tug Tight" Pull-Tight Seals	Red	100

Gemini Tote Seals

Twin set seals secure totes or other applications requiring two seals.

- Consecutively numbered.



Gemini Tote Seals

Stock Number	Description	Color	Sets Per Case
SE1035	5" "Gemini" Tote Seals	Red	500
SE1036	5" "Gemini" Tote Seals	Blue	500
SE1037	5" "Gemini" Tote Seals	Green	500

Handilok Seals

Easy-to-use, padlock seals designed for one-handed operation.

- Consecutively numbered with spring-hinged arm.



Handilok HL-8 Seals

Stock Number	Description	Color	Quantity Per Case
SE1021	"Handilok HL-8" Seals	Red	1,000
SE1022	"Handilok HL-8" Seals	Blue	1,000

Plastic Padlock Seals

All purpose seals with engineered break-point for fast access.

- Consecutively numbered seals feature 12 pt. break-point strength.



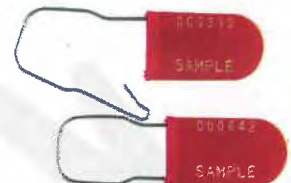
PP-2 Plastic Padlock Seals

Stock Number	Description	Color	Quantity Per Case
SE1025	"PP-2" Plastic Padlock Seals	Red	1,000
SE1026	"PP-2" Plastic Padlock Seals	Blue	1,000

Wire Padlock Seals

One-time use seals require a cutter for removal.

- Consecutively numbered with galvanized wire hasp.



PW-6 Wire Padlock Seals

Stock Number	Description	Color	Quantity Per Case
SE1023	"PW-6" Wire Padlock Seals	Red	1,000
SE1024	"PW-6" Wire Padlock Seals	Blue	1,000